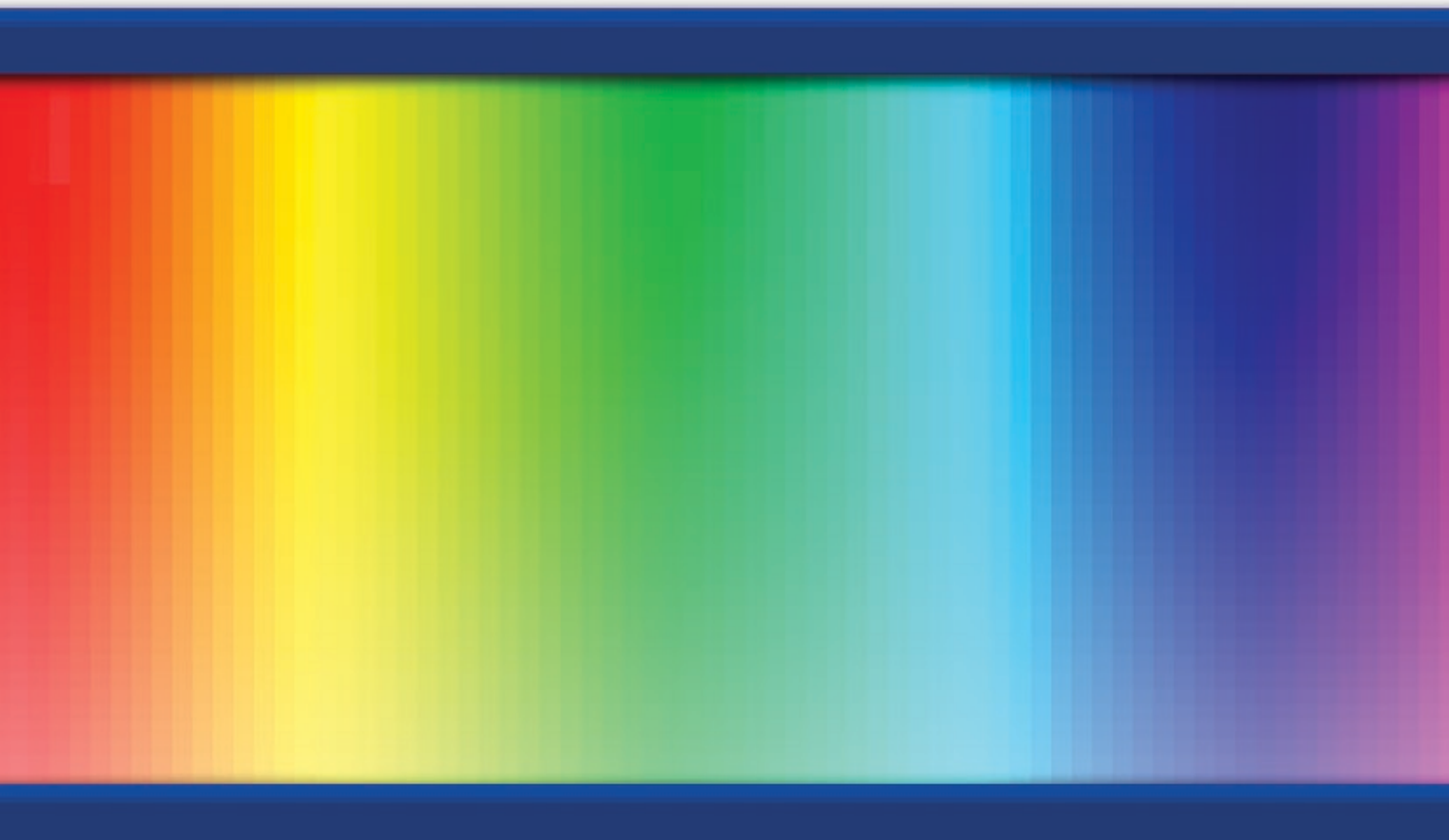




Product Catalogue

EMEA / July 2015 edition

(ver.2)



www.rosco.com

- **Colour and Correction Filters**3
- **Dance Floors**7
- **Fog Machine and Fluids**10
- **Gobos and Projection Equipment**12
- **Luminaire and Lighting Accessories**17
- **Scenic Shop Products**28
- **Staging Products for Theatre, Film & Video**33



*Clearance items will be discontinued after current inventory has been exhausted.
Contact Rosco for more information.

■ **Supergel**

Supergel is the most widely used colour filter in the world today. It is comprised of a range of more than 75 colours and 15 diffusions. Selected primarily because of the excellence and range of colour, it is unique in its manufacturing and durability as well.



For a detailed list consult the swatchbook or Rosco website.

Supergel Sheets 61cm x 50cm
Supergel Rolls 61cm x 7.62m

■ **E-Colour+**

A comprehensive range of European colour and correction filters based on the Cinemoid™ system.



For a detailed list of colours, diffusers and reflection materials consult the E-Colour+ swatch book or the Rosco website.

E-Colour+ Half Sheets 61cm x 53cm
E-Colour+ Full Sheets 1.22m x 53cm
E-Colour+ Rolls 1.22m x 7.62m

■ **Cinegel**

The Academy Award® winning range of colour and correction filters, Cinegel includes diffusers, reflectors and the Storaro Selection and CalColor filters.



For a detailed list of products, consult the Cinegel swatchbook or the Rosco website.

Cinegel Sheets 61cm x 50cm
Cinegel Rolls (Most rolls are 1.22m x 7.62m.)

■ **Roscolux**

Roscolux is the most widely used colour filter range for theatre, film, television, live entertainment and architectural applications.



For a detailed list of the colours and diffusers of the range consult the Roscolux swatchbook or Rosco website.

Roscolux Half Sheets 61cm x 53cm
Roscolux Full Sheets 1.22m x 53cm
Rolls 1.22m x 7.62m

PROTECTIVE FILTERS

■ **Thermashield**

When used in conjunction with Roscolux or Cinegel colour filters, Thermashield prevents the colour filters from absorbing IR energy as heat, thus allowing the filters to last much longer. For maximum efficiency, a minimum 2.5cm air space must be maintained between Thermashield and the colour filter.

Thermashield 30cm x 30cm
No. 199510
Thermashield 50cm x 61cm
No. 199511

■ **Super Heat Shield™**

Super Heat Shield is a heat resistant plastic that acts as a barrier, blocking the heat of a fixture. For maximum efficiency, a minimum 2.5cm air space must be maintained between Super Heat Shield and the colour filter.

Super Heat Shield 61cm x 50cm sheet
No. 1991
Super Heat Shield 61cm x 7.62m roll
No. 19911
Super Heat Shield 61cm x 15.24m roll
No. 19912
Super Heat Shield 1.22m x 7.62m roll
No. 19913

■ **UV Filter™**

Rosco UV Filter effectively extends the life of your colour filter by absorbing the damaging ultraviolet energy that can prematurely fade dyes.

UV Filter 50cm x 61cm sheet
No. 31141
UV Filter 61cm x 15.24m roll
No. 3114
UV Filter 1.22m x 7.62m roll
No. 311413

■ **Storage Drawers CLEARANCE***

Heavy gauge two-inch deep corrugated drawer and sleeve that accepts 51cm x 61cm sheets of Rosco colour filters. Shipped completely assembled. Packed six to a case.

Storage Drawers (set of 6)
No. 88860110



OPTI-FLECS

Filters for LED Enhancement, Correction and Softening

Opti-FLECS offers an array of options to target problematic aspects of LED lighting. Available in 21 standard diffusions and colours, these semi-rigid filters offer a durable, reusable filter solution that can be inserted into a multitude of LED fixtures used onstage, in broadcast studios and architectural installations.

No.	Colour
9101	Smoothing Frost
9106	Powder Frost
9116	Double Hamburg Frost
9121	Silk
9201	Soft Pink Tint
9206	Soft Rouge
9211	Soft Amber
9216	ND Frost
9301	Barely Minus Green
9306	1/4 Minus Green
9311	1/2 Minus Green
9316	Rouge
9321	Blushed
9326	Barely Bronze
9331	Warm Bronzer
9406	Bastard Amber
9411	1/4CTO
9416	1/2CTO
9421	Golden Bronzer
9501	.3ND
9506	.6ND



Size	Suffix
30cm x 30cm sheets (11.8" x 11.8")	1030
60cm x 60cm sheets (23.6" x 23.6")	1060

Options for customizing the colour and size of OPTI-FLECS filters to fit the requirements of your job are available.

OPTI-FLECS Swatchbook

Contains one 7.5cm x 12cm (3"x5") piece of every OPTI-FLECS filter.

No. 950 SBOPT 0305

Lens/Reflector Cleaner

The professional's choice for over 50 years. Specially designed for cleaning lenses, mirrors, reflectors, glass and dichroic filters, and other fine quality optics.

Lens Cleaner 60ml drip bottle

No. 72021

Lens Cleaner 236ml spray bottle

No. 72023

Lens Cleaner 473ml drip bottle

No. 72025

Lens Tissue

Premium, lightweight, disposable, micro-fiber tissue for cleaning lenses, filters and optics.

Lens Tissue 10.16cm x 15.24cm booklet

No. 74461

Permacolor Dichroic Glass Filters

Rosco Permacolor dichroic glass filters are the perfect choice for designers requiring long-lasting, high-quality filters. Permacolor withstands the heat of high temperature lighting fixtures like MR16, metal halide, and high wattage tungsten lamps and are ideal for use in permanent installations.

Rosco's range of standard colours includes the bright saturated colours prone to premature fading in gel as well as a selection of pale tints and accent colours selected by leading architectural designers around the world.

Colour	No.	Colour	No.
Bastard Amber	31002	Lilac	31055
Amber Blush	31018	Lavender 57	31057
Bright Straw	31012	Indigo	31059
Goldenrod	31013	Booster Blue	31062
Yellow	35200	Mediterranean Blue	31065
Amber	35401	Sea Blue	35700
Victorian Gold	33114	Cyan	35590
Medium Orange	35600	Light Green Blue	31076
Orange	35900	Sky Blue	35400
Flame Red	36100	Light Blue Green	35100
Primary Red	36500	Primary Blue	31080
Light Pink	31033	Medium Red Blue	34600
Pale Pink	31337	Deep Purple	34200
Medium Pink	34758	Peacock Blue	31073
Hot Pink	34630	Turquoise	34853
Deep Magenta	34763	Gaslight Green	33388
Vivid Magenta	34640	Industrial Green	31086
Lavender	34965	Light Yellow Green	34959
Mauve	31050	Fern Green	35156
Purple Fusion	31048	Primary Green	34954
Lavender Accent	31054		

Colour	No.	Colour	No.
White Diffusion	33026	ND .15	43415
IR/UV Block	38000	1/2 Minus Green	43313
UV Blocker	34000	1/4 Minus Green	43314
CTO	43407	1/8 Minus Green	43318
3/4 CTO	43411	CTB	43202
1/2 CTO	43408	3/4 CTB	43203
1/4 CTO	43409	1/2 CTB	43204
1/8 CTO	43410	1/4 CTB	43208
ND .6	43403	Double Coated	
ND .3	43402	UV Pass	33660

Size

- 2" x 2" (50.8 mm) square
- 1.95" (49.5 mm) round
- 5.25" (133 mm) round
- 6.3" (160 mm) round
- 8.25" (209 mm) round

Custom sizes available, call for pricing.

Permacolor Frames

(Safety Grid Included)

Permacolor Frame 158mm x 158mm
(for standard 133mm size)

No. 0059525

Permacolor Frame 190mm x 190mm
(for standard 160mm size)

No. 0059075

Permacolor Frame 254mm x 254mm
(for standard 209mm size)

No. 97100

Filter Kits

A range of gel kits, sized at 30.48cm x 30.48cm (12"x12"), that have been configured to control the output of lighting fixtures used in filmmaking, photography and video productions.



Photo Lighting Kit

The essential lighting filters to balance and compose light for photography, including: CTO's, CTB's, Neutral Densities and a variety of effects colours.

Photo Lighting Kit
No. 110 11012 0001

Beauty Kit

A selection of subtle, cosmetic colour filters that have been hand-picked by fashion experts to beautify, soften and enhance skin tones.

Beauty Kit
No. 110 11212 0001

Digital After Dark® Kit

A selection of lighting filters designed for night shoots and for adding vibrant colour into nighttime imagery and light painting compositions.

Digital After Dark® Kit
No. 110 11412 0001

CalColor™ Kit

Rosco's Academy Award® winning system of calibrated lighting filters produce pure primary and secondary colours to enhance your composition.

CalColor™ Kit
No. 110 11612 0001

Color Correction Kit

Specialized filters to balance common light sources in a shot, including a complete set of CTO's, CTB's, Plusgreens & Minusgreens.

Color Correction Kit
No. 110 11812 0001

Diffusion Kit

A collection of materials that affect the shape, texture and quality of light and shadow in a composition.

Diffusion Kit
No. 110 12012 0001

Color Effects Kit

An assortment of popular vibrant and contrasting colour filters for creating a wide variety of common lighting effects.

Color Effects Kit
No. 110 12412 0001

Cinegel Sampler Kit

A selection of Rosco's Academy Award-winning Cinegel line, including a range of colour correction filters for balancing common light sources and diffusions for softening shadows, or altering the direction and spread of the beam.

Cinegel Sampler Kit
No. 110 12212 0001

Flash Packs

A range of gel kits for photographers shooting with speedlights to enhance their lighting setups. Each Flash Pack contains at least 55 pieces of filter, sized at 3.81cm x 13.97cm (1.5" x 5.5") - perfect for covering any speedlight strobe.



The Strobist™ Collection

The essential filters, chosen by Strobist.com founder David Hobby, that every photographer needs to balance & compose the light in their shot.

The Strobist™ Collection

No. 110 11005 0001



Beauty Flash Pack

A selection of cosmetic filters that have been hand-selected by fashion photographers to enhance and beautify skin tones.

Beauty Flash Pack

No. 110 11205 0001



Digital After Dark® Flash Pack

A collection of coloured lighting filters to create dramatic night-time photos, selected by Kevin Adams, founder of the "Digital After Dark®" blog.

Digital After Dark® Flash Pack

No. 110 11405 0001



CalColor™ Flash Pack

Two pieces of every CalColor - Rosco's patented system of primary & secondary colour filters - for photographers to precisely control the colour of their light.

CalColor™ Flash Pack

No. 110 11605 0001

RoscoSleeves™

For simple and economical control of fluorescent lighting, RoscoSleeves can be supplied in any Rosco filter colour—or combination of colours) Roscolux, Cinegel, E-Colour+ and GamColor. Not recommended for use with High Output or Very High Output lamps. T5 and T8 Sleeves come standard with UV filter in addition to the colour selected.

T5 x 61cm (24")	No. 110 08401 2405
T8 x 61cm (24")	No. 110 08401 2408
T12 x 61cm (24")	No. 110 08401 2412
T5 x 91.44cm (36")	No. 110 08401 3605
T8 x 91.44cm (36")	No. 110 08401 3608
T12 x 91.44cm (36")	No. 110 08401 3612
T5 x 121.92cm (48")	No. 110 08401 4805
T8 x 121.92cm (48")	No. 110 08401 4808
T12 x 121.92cm (48")	No. 110 08401 4812
T5 x 152.40cm (60")	No. 110 08401 6005
T8 x 152.40cm (60")	No. 110 08401 6008
T8 x 2.44m (96")	No. 110 08401 9608
T12 x 2.44m (96")	No. 110 08401 9612

ChromaSleeves

ChromaSleeves are body-coloured, extruded polycarbonate sleeves with an added UV absorber to prevent premature colour fading. Available in seven standard stocked colours. Not recommended for use with High Output or Very High Output lamps.

Royal Blue	No. 110 08410	Pink	No. 110 08414
Green	No. 110 08411	Yellow	No. 110 08415
Ruby Red	No. 110 08412	Amber	No. 110 08417
Purple	No. 110 08413		

Add suffix to product code for each size

T5 x 48"	4805
T8 x 48"	4808

Quick Color Sleeves

This gel-only product is a flat welded tube of Rosco colour filter, made in any colour from any line of Rosco gel. T5 and T8 sleeves come standard with UV filter. Quick Color Sleeves can be supplied from any colour in the Roscolux, Cinegel or E-Colour+ ranges. Folded flat for easy shipping and storage, the sleeve puffs open like an envelope to slide over standard fluorescent tube. Not recommended for use with High Output or Very High Output lamps.

T5 x 61cm (24")	No. 110 08430 2405
T8 x 61cm (24")	No. 110 08430 2408
T12 x 61cm (24")	No. 110 08430 2412
T5 x 91.44cm (36")	No. 110 08430 3605
T8 x 91.44cm (36")	No. 110 08430 3608
T12 x 91.44cm (36")	No. 110 08430 3612
T5 x 121.92cm (48")	No. 110 08430 4805
T8 x 121.92cm (48")	No. 110 08430 4808
T12 x 121.92cm (48")	No. 110 08430 4812
T5 x 152.40cm (60")	No. 110 08430 6005
T8 x 152.40cm (60")	No. 110 08430 6008
T12 x 152.40cm (60")	No. 110 08430 6012

Please specify Rosco gel colour when ordering.



■ Floor Catalogue

Rosco's floor products are organized in a multi-page catalogue. Available as a download at www.rosco.com

■ Dance Floor

Rosco Dance Floor is lightweight (2.85kgs per linear metre) and is reversible with black on one side and your choice of white or grey on the other. Floor thickness is 1.3 mm, width is 1.6 m and it is sold by the linear metre or full rolls 40m long.

Black/Grey 1.6m x linear metre
No. 300 08720 6302

Black/White 1.6m x linear metre
No. 300 08723 6302

Blue/Green Chroma Floor 1.6m x linear metre
No. 300 09720 6302

Black/Grey 2m x linear metre
No. 300 08720 7902

Black/White 2m x linear metre
No. 300 08723 7902



■ Adagio™

Adagio's durable surface can handle tap and other hard shoe dance styles, yet it is supple enough for ballet and modern dance styles. Since Adagio is dimensionally stable, it is suitable for permanent or semi-permanent installation. 3.80kgs.per linear metre/117.9kgs. per roll. Floor thickness is 1.5mm, width is 1.6m and it is sold by the linear metre or full rolls 31m long.

Black 1.6m x linear metre
No. 87862215

Grey 1.6m x linear metre
No. 87863515

■ Adagio™ Tour

Adagio Tour lays flat quickly and provides the same versatile surface as Adagio. Adagio Tour weighs only 2.70kgs per linear metre so, as its name implies, it is excellent for touring dance companies. Floor thickness is 1mm, width is 1.6m and is sold by the linear metre or full rolls 31m long.

Black 1.6m x linear metre
No. 87862314

Grey 1.6m x linear metre
No. 87862414

■ Arabesque™

Arabesque is, on a cost-per-square-metre basis, Rosco's most affordable floor. With a thickness of 2mm, Arabesque offers durability that is ideal for hard-soled styles of dance such as tap, hard shoe Irish and Flamenco. Arabesque is available in a marble finish that not only helps hide scuff marks, but also adds a note of elegance to your studio. The floor is 2m wide and can be specified by the linear metre or full 20m roll.

Marble Black 2m x 20m metre
No. 300 08222 7900

Marble Grey 2m x 20m metre
No. 300 08235 7900

■ Studio Floor

An ultra matte, black vinyl floor for ballet, theatre, or any application where a light-absorbing surface is needed. Studio Floor is not appropriate for heavy traffic or other types of dance. Studio Floor is .08" thick and rolls measure 1.83m wide by 18.29m long, weighing 113.4kgs per roll. Sold by full roll only.

Special Order Only.

Studio Floor Black Matte 1.83m x 18.29m

No. 300 78035 720

■ Performance Floor

A durable, all-purpose floor, best for permanent or semi-permanent installations in studios, multi-purpose rooms, stages and showrooms—anywhere traffic is heaviest. Available in black, white, light and dark grey. Performance Floor is 2.5mm thick and rolls measure 1.83m wide by 18.29m, and weigh 127kgs per roll. Sold by full roll only.

Special Order Only.

Black 1.83m x 18.29m

No. 8781035

Light Grey 1.83m x 18.29m

No. 8781031

Also available in White and Dark Grey.

■ Roscoleum Floor

A hardwearing floor that provides an ideal surface for the heaviest traffic areas. It stands up to tap, Flamenco and Irish dance but will easily accommodate soft shoe styles as well. 2.5mm thick, 2m wide and approximately 32m long. Weight 192.8kgs per roll. Sold by full roll only.

Special Order Only.

Black 2m x 32m

No. 87812219

Grey 2m x 32m

No. 87813519

■ Show Floor

Super glossy floor for special events, commercials and fashion promotions. It is not recommended for heavy traffic or for permanent installation. Available in high gloss black, white and red. Show Floor is 2.03mm thick, and each roll measures 1.83m wide by 18.29m long, weighing 124.74kgs. Sold by full roll only.

Special Order Only.

■ Roscotiles

This rugged floor product is 91.4cm by 91.4cm squares, making it easy to pick up and put down. Designed for video production facilities, each 3mm thick, 5.4kgs tile is designed to lie flat for temporary, as well as permanent installations. Available in White, Black and TV Grey.

White

No. 8726

Black

No. 8725

TV Grey

No. 8727

■ Rosco SubFloor

Rosco SubFloor was designed to provide the perfect combination of resilience and stability to absorb the energy from a dancer's impact when contact is made with the floor. The SubFloor's simplistic design does not need any adhesives or special hardware, which means that almost anyone can easily install it into their space. This design also enables Rosco's SubFloor to be un-installed, stored, shipped and re-installed with ease when needed. The system consists of 1.07m x 1.07m panels with closed-cell foam pads that connect to each other using Rosco's unique Wave-Lock™ design. Perimeter pieces, Ramps and Customizing Panels lock the entire floor together.

Contact Rosco for further information.



Unique WaveLock™ design assures easy installation and safe, secure flooring.

■ Floor Cleaners

Rosco offers different floor cleaning products, designed to meet every need. Cleaners available in 1 litre and 3.79 litres.



Rosco All Purpose Floor Cleaner

Designed for the routine, regular cleaning of all Rosco vinyl floors.

1 litre

No. 300 09116 0034

3.79 litres

No. 300 09116 0128

Rosco Heavy Duty Floor Cleaner

For stripping and deep cleaning of Rosco floors.

1 litre

No. 300 09112 0034

3.79 litres

No. 300 09112 0128

Granulated Floor Cleanser

Granulated, dissolvable chemical for cleaning all Rosco flooring surfaces.

0.91kg tub

No. 871010



■ Floortapes

For installing floors in temporary and semi-permanent situations.

Black Vinyl tape 48mm x 33m

No. 501410

White Vinyl tape 48mm x 33m

No. 501510

Grey Vinyl tape 48mm x 33m

No. 501610

Clear Vinyl tape 48mm x 33m

No. 501310

Roscofloor Double Stick tape 48mm x 25m

No. 500410

■ Floor Adhesives

For permanent installations. Consult a professional flooring contractor before installation.

Premium Adhesive No. 755

For most porous surfaces, including concrete which is above grade.

3.79 litres (weighs 5.44kgs)

No. 300 08755 0128

11.37 litres (weighs 14.06kgs)

No. 300 08755 0448

Coverage is approximately 18.5sq metres per 3.79 litres.

■ Floor Welding Threads

Welding threads are available to aid in permanent seam sealing by professional contractors. Rosco has welding threads available for Adagio, Roscolem, Arabesque, Performance Floor, and Studio Floor.

Floor Type	Roll Length
Adagio	50m
Roscolem	50.29m
Performance Floor	152.40m
Arabesque	125m
Studio Floor	152.40m

■ PortaBarre™

A truly portable ballet dance barre, Rosco's aluminum PortaBarre uses an internal double button interlocking system, making assembly and disassembly a matter of a few minutes, without requiring tools or locking keys. Sold complete with a custom designed carrying case.

2.74m barre with carrying case

No. 09095 0108

1.37m barre with carrying case

No. 300 09095 0054

1.22m extension for 2.7m barre

No. 09095 0048

■ Rosco Floor Bag

Designed specifically for dancers and dance companies who tour, the Rosco Floor Bag is made of durable water-resistant PVC fabric. A hook and loop fastener along the entire length of the bag keeps it securely shut while in transit, and also allows it to open flat for loading and unloading.

Rosco Floor Bag

No. 300 08725 6301

Vapour Series Fog & Haze Machines

Designed with features to meet the needs of anyone needing reliable atmospheric effects, the Vapour Series has been engineered from the ground up to meet the diverse needs of a wide range of applications including theatre, feature film & television, theme parks and photographic studios. All of the Vapour fog and haze machines have been designed to be affordable and easy-to-use & maintain thanks to features like DMX on-board, intuitive remotes and an air-input valve for simple cleaning.

No matter how you use fog or haze – Rosco’s got a machine for you.

■ Mini-V

The most affordable and compact fog machine in the range, the Mini-V delivers a continuous stream of professional-quality fog. The Mini-V's small design and energy-efficient, durable heat exchanger make it a perfect choice for mobile users or applications that lack the space for a larger fog generator.



Mini-V Fog Machine - 120v

No. 200 81110 0120

Mini-V Fog Machine - 240v

No. 200 81110 0240

■ Vapour

The workhorse of Rosco's new family of fog machines, the Vapour comes packed with all the features that a professional effects technician could want - including solid reliability and ease of maintenance. Featuring continuous fog output, a simple, one-step cleaning process, digital DMX and common core components that are designed to be replaced quickly – the Vapour can be relied upon to get the job done.



Vapour Fog Machine - 120v

No. 200 82220 0120

Vapour Fog Machine - 240v

No. 200 82220 0240

■ Vapour Plus

Designed specifically to fill large venues and outdoor spaces quickly and efficiently, the Vapour Plus produces enormous bursts of fog. This machine produces stadium-sized fog effects, yet is small enough to mount inside box truss and power from a single mains circuit. Features include a simple, one-step cleaning process, digital DMX, common core components that are designed to be quickly and easily replaced, and the ability to be mounted vertically to create cryogenic-style effects.



Vapour Plus Fog Machine - 120v

No. 200 83330 0120

Vapour Plus Fog Machine - 240v

No. 200 83330 0240

■ V-Hazer

Quiet and reliable, the V-Hazer creates beautiful haze that spreads throughout a venue consistently and smoothly. The V-Hazer features a blower that turns off when not in-use to ensure the quietest operation possible, as well as continuous output, a simple, one-step cleaning process and digital DMX. Adjust output on the fly with remote, or gain independently-controlled fan speed and haze volume through DMX-control.



V-Hazer - 120v

No. 200 84440 0120

V-Hazer - 240v

No. 200 84440 0240

■ Model 1700™ CLEARANCE*

The Rosco Model 1700 fog machine is a high quality machine—durable, dependable, and with a lower cost. The machine delivers fog output more than previous fog machines, but draws less power—1190W.



Model 1700 120v with remote

No. 200 21700 0120

Model 1700 240v with remote

No. 200 21700 0240

1700/1900 DMX Remote

No. 200 51700 RDMX

15.24m remote extension—1700/1900

No. 200 51587 0050

30.48m remote extension—1700/1900

No. 200 51588 0100

Model 1700 Carrying Case

No. 200 41700 0000

■ Model 1900™ CLEARANCE*

Rosco’s Model 1900 fog machine is a very high output professional fog machine, designed primarily for industrial applications. Its most unique feature is the extremely high output, almost twice as much as the Model 1700.



Model 1900 120v with remote

No. 200 21900 0120

Model 1900 240v with remote

No. 200 21900 0240

RDMX 1700/1900 DMX Remote

No. 200 51700 RDMX

15.24m remote extension—1700/1900

No. 200 51587 0050

30.48m remote extension—1700/1900

No. 200 51588 0100

■ Coldflow™

Converts liquid carbon dioxide to dry ice to chill an aluminum chamber. The output of a fog machine passes through the aluminum chamber and is chilled so that it lays close to the ground. For best effect use Rosco Stage & Studio Fluid.



Coldflow – 120v

No. 200 61700 0120

Coldflow – 240v

No. 821 561700 0240



■ Rosco Fog Fluid

Rosco Fog Fluid, for over 30 years is the most widely used fog fluid in theatre, live entertainment and theme parks. When vaporized, this water-based formulation produces a dense, realistic fog with a long hang time.

Fog Fluid 1 Litre

No. 200 08301 0010

Fog Fluid 4 Litre Bottle

No. 200 08301 0040



Rosco has been honored by the Academy of Motion Picture Arts and Sciences® four times. One of the Oscars (in this case a Scientific and Technical Award) was for "the development of a safe, non-toxic fluid for use in motion pictures."

■ Stage and Studio Fog Fluid

A water-based fluid which creates dense fog that will dissipate more quickly than standard fluid. Also recommended for use with the Rosco Coldflow to produce low-lying fog.

Stage and Studio Fog Fluid 1 Litre

No. 200 08302 0010

Stage and Studio Fog Fluid 4 Litre Bottle

No. 200 08302 0040

■ Rosco Clear Fog Fluid

Produces dense fog with a long hang time without the traditional Rosco scent.

Clear Fog Fluid 1 Litre

No. 200 08305 0010

Clear Fog Fluid 4 Litre Bottle

No. 200 08305 0040

■ Rosco Light Fog Fluid

A water-based fluid that produces a more translucent fog, which disperses quickly into a beam-catching haze effect while maintaining a long hang time.

Light Fog Fluid 1 Litre

No. 200 08304 0010

Light Fog Fluid 4 Litre Bottle

No. 200 08304 0040

■ V-Hazer Fluid

Designed for use exclusively with Rosco's V-Hazer, this fluid creates a smooth haze inside performance venues, photographic studios and production soundstages. Due to its water-based composition, V-Hazer Fluid won't leave behind an oily residue on performers, set pieces or equipment. When used with the Rosco V-Hazer, this fluid will create a steady, reliable haze that will hang in the air for hours to enhance lighting effects.

V-Hazer Fluid, 4 Litre Bottle

No. 200 08800 0135

■ FX Fluid

FX Fluid 1 Litre

No. 200 08306 0010

FX Fluid 4 Litre Bottle

No. 200 0830 0040

■ Rosco Bubble Fluid

Building on Rosco's 30+ years of success manufacturing the world's highest quality fog fluids, Rosco has developed a new formulation of bubble fluid. Engineered as a universal fluid to work in any bubble machine, Rosco's water-based Bubble Fluid creates higher volumes of extra colorful bubbles that fly higher and farther than existing fluids currently available—with next to no residue left behind, which makes it safer to use on performance and dance spaces or in areas with expensive technology.

Bubble Fluid – 3.785L

200 09500 0128

Gobo Catalogue

Rosco's Gobo Catalogue lists the entire range of standard gobos available, as well as several pages of useful technical information. It is available from any Rosco office or reseller or may be downloaded from the Rosco website. You can also choose gobos from the Rosco website (www.rosco.com) or from the free MyGobo app for iPhones, iPads, and iPod Touch.



Standard Designs

Rosco offers approximately 2,000 standard designs in its gobo collection. Each design is available for virtually any known fixture used in theatrical or display lighting. Rosco re-sellers can usually deliver standard gobos either off the shelf or within a day or two.

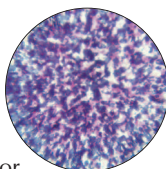


No. 77730

Standard Steel and Glass gobo designs available in all sizes.

Colorizers™

Multi-coloured glass gobos that can be used alone or in combination with a steel gobo. Recommended for fixtures up to 1,000 watts. Requires the use of either a Glass Gobo Holder or the Universal Iris Slot Holder.



*No. 55004

Available in Standard B and most Moving Light sizes.

Also available in X size for Rosco X24 projector.

Stippled Series

Blue and Lavender	No. 445004
Amber and Red	No. 445005
Red, Blue and Lavender	No. 445006
Green, Blue and Lavender	No. 445007
Green and Yellow	No. 445008

Featherlight Series

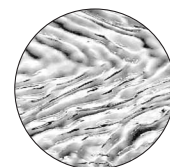
Blue, Lavender and Yellow	No. 446201
Blue and Green	No. 446202
Red, Lavender and Yellow	No. 446203
Blue and Lavender	No. 446204
Green and Yellow	No. 446205

Free Flow Series

Cool: Blues, Reds and Lavenders	No. 446101
Warm: Red, Ambers, Blue and Lavenders	No. 446102
Midnight: Blues, Lavenders and Greens	No. 446103

Image Glass™

Deeply textured glass gobos that bend or refract light. Recommended for use in moving lights with lamps up to 1200 watts and in ellipsoidal fixtures up to 600 watts. Requires the use of the Universal Iris Slot Holder.



No. 33621

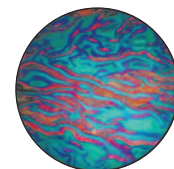
Available in Standard B and most Moving Light sizes.

Also available in X size for Rosco X24 projector.

Flower	No. 443600	Random Blisters	No. 443614
Lined	No. 443601	Coalescing	
Plume	No. 443602	Bubbles	No. 443615
Lt. Plume	No. 443603	Raised Mosaic	No. 443616
Pebble	No. 443604	Hammered	No. 443617
Honeycomb	No. 443605	Wood Grain	No. 443618
Waves	No. 443606	Ripples	No. 443619
Irregular		Ice	No. 443620
Strands	No. 443607	Dune	No. 443621
Banded Lines	No. 443608	Sparkelite	No. 443622
Lazy Swirls	No. 443609	Reflections	No. 443623
Basket Weave	No. 443610	Rain Glass	No. 443624
Pin Feathers	No. 443611	Foam Bubbles	No. 443625
Winter Frost	No. 443613		

ColorWaves™

Each ColorWave glass gobo is coated in one of five dichroic colours. There are four different styles—Waves, Ripple, Strands, Mosaic—and thus 20 different choices in the range. Recommended for use in moving lights with lamps up to 1200 watts and in ellipsoidal fixtures up to 600 watts. Requires the use of the Universal Iris Slot Holder.



*No. 43104

Available in Standard B and most Moving Light sizes.

Also available in X size for Rosco X24 projector.

Waves - Red	No. 4433001	Mosaic - Red	No. 4433301
Waves - Amber	No. 4433002	Mosaic - Amber	No. 4433302
Waves - Magenta	No. 4433003	Mosaic - Magenta	No. 4433303
Waves - Cyan	No. 4433004	Mosaic - Cyan	No. 4433304
Waves - Indigo	No. 4433005	Mosaic - Indigo	No. 4433305
Ripple - Red	No. 4433101	Sparkelite - Red	No. 4433401
Ripple - Amber	No. 4433102	Sparkelite - Amber	No. 4433402
Ripple - Magenta	No. 4433103	Sparkelite - Magenta	No. 4433403
Ripple - Cyan	No. 4433104	Sparkelite - Cyan	No. 4433404
Ripple - Indigo	No. 4433105	Sparkelite - Indigo	No. 4433405
Strands - Red	No. 4433201		
Strands - Amber	No. 4433202		
Strands - Magenta	No. 4433203		
Strands - Cyan	No. 4433204		
Strands - Indigo	No. 4433205		

■ Prismatic™

Recommended for use in moving lights with lamps up to 1200 watts and in ellipsoidal fixtures, lamps up to 600 watts. Requires the use of the Universal Iris Slot Holder.



No. 43801

Available in Standard B and most Moving Light sizes.

Prismatics are not available for use in Rosco's X24.

Kaleidoscope	No. 443801	Fiery Sun	No. 443806
Cool Lavender	No. 443802	Warm Contrast	No. 443807
Spring Greens	No. 443803	Patriotic	No. 443808
Sunset	No. 443804	Crystalline	No. 443809
Blue Water	No. 443805		

■ Universal Iris Slot Holder

Allows a glass gobo to be placed in the iris slot of fixture in front of the gate. Double sided to allow the use of two gobos, glass and/or steel, in the iris slot at the same time. Fits the ETC Source Four, Altman Shakespeare and other modern spotlights. For use with 86mm standard "B" size glass gobos only.



Universal Iris Slot Holder
No. 15786

■ Steel & Glass Gobo Holders

With the breadth and depth of gobos available, it is important to choose the gobo holder that is appropriate for your luminaire (most luminaires must use a specific size gobo). Some gobos are thicker than others and require a special holder to accommodate it. When selecting a gobo holder, care must be taken to ensure that both the overall dimensions of the holder and the size of the gobo it will accept, are compatible with the lantern used.



This is just a small selection of luminaires. For those that are not listed please contact one of our Customer Service Team.

Manufacturer/Lantern	Steel	Glass
ETC		
Source4 (A size)	No. 77GH61	No. 77GH62
Source4 (B size)	No. 77GH59	No. 77GH56
Source4 Iris Slot (B size)	—	No. 77GH77
Source4 Junior (M size)	No. 77GH63	No. 77GH64
SELECON		
Astral/Aclaim (M size)	No. 77GH60	—
STRAND CENTURY		
Brio (A size)	—	No. 77GH04
Cantata (A size)	No. 77GH74	No. 77GH05
Cantata (B size)	No. 77GH73	—
SL Coolbeam (B size)	—	No. 77GH76
T Spot (A size)	No. 77GH74	—
T Spot (B size)	No. 77GH73	—

Note: unless otherwise specified, all Rosco 'A' & 'B' size glass gobos are made with 70mm glass, bevelled to its overall diameter.

■ iPro™ Slide Library

Designed specifically for the iPro, Rosco offers images in a wide range of categories that are certain to suit your needs for most theatrical productions and live entertainment events.



■ Custom iPro™ Slide

Virtually any design you can create on your computer can be made into a Custom iPro Slide in just one day. Using Adobe Photoshop or similar software, prepare your design and send it to Rosco at gobocustom@rosco.com. Within 24 hours, your finished assembled iPro slide will be on its way back to you.

Custom iPro Slide
No. 265 27000 0860

■ Cool Ink™ Plastic Gobos

Cool Ink gobos are a great solution for temporary projections in many LED luminaires. Check with the fixture manufacturer, or Rosco, to ensure that your LED luminaire will accept plastic gobos. The Cool Ink gobo's rigid plastic ring secures the Cool Ink gobo for easier handling and installation*. Rosco provides fast turnaround from receiving your artwork to shipping the product, usually one business day for Cool Ink Gobos.



*As with all gobos, handle via the bezel to avoid fingerprints on the image area.

- Custom Plastic Gobo, Custom Size**
No. 265 27000 0999
- Cool Ink Standard Gobo Design**
No. 265 27000 0000
- Cool Ink Custom Plastic Gobo, "B" Size**
No. 265 27000 CI86
- Cool Ink Custom Plastic Gobo, "E" Size**
No. 265 27000 0375
- Kreios Cool Ink Custom Plastic Gobo**
No. 265 2700KR375

■ Cool Ink™ HD Gobos

Cool Ink HD gobos are recommended when a longer lifespan and greater projected resolution are desired from your plastic gobo. Protective coated glass layers and a metal bezel sandwich the plastic for greater durability and to allow the image area to be cleaned with a soft dry cloth (unlike straight plastic). A true opaque black background in the Cool Ink HD gobo creates the higher definition image. Rosco provides fast turnaround from receiving your artwork to shipping the product, usually just two business days for Cool Ink HD Gobos.



- Cool Ink HD Custom Plastic Gobo, Custom Size**
No. 265 2700HD999
- Cool Ink HD Custom Plastic Gobo, "B" Size**
No. 265 27000HD86
- Cool Ink HD Standard Gobo Design**
No. 265 2700HD000
- Kreios Cool Ink Custom Plastic Gobo, specifically for Kreios units, 37.5mm**
No. 255 2HDKR375

Belts vs. Gears:

The Vortex 360 and the Double Gobo Rotator, shown on the next page, use precision machined metal gears as the drive mechanism. From the motor shaft to the gobo wheel, each point of contact in the drive assembly is gear to gear. The advantages are as obvious now as they were nearly twenty years ago when these products were first designed—rock solid reliable movement and a durable, low maintenance mechanism.

The Revo, Revo PRO and Simple Spin rotators, introduced in 2011, were designed with belt drive systems. The significant benefit of the belt drive in Rosco's new rotators series is that it is virtually silent, and fully 25% quieter than other rotators. An inherent difference with belt drive is a more consistent smooth rotation as the belt is constantly in contact.

■ RevoPRO™ Gobo Rotator

A dual programmable rotator which includes complete DMX controlled indexing features plus a stand-alone programmable mode that requires no DMX. Internal 100-240v mains power, so no PSU is required. Like all Rosco Revo rotators, it is built with a high temperature silicon belt drive, stepper motors, a unique threaded collar for easy installation of glass or steel gobos, friction lock for secure placement and dimmer control capability.



RevoPRO™ Gobo Rotator
No. 205 64250 0000

■ SimpleSpin™ Dual Gobo Rotator

One stepper motor, two gobos, Rosco's SimpleSpin rotator is a variable speed device capable of rotating two gobos in opposing direction. A "set and forget" on-board speed control and direction switch is included, as is an internal universal power supply at 100-240v, 50/60hz. The device can also be controlled by connecting it to a dimmer. Like all Rosco Revo rotators, it is built with a high temperature silicon belt drive, a unique threaded collar for easy installation of glass or steel gobos and a friction lock for secure placement.



SimpleSpin™ Dual Gobo Rotator
No. 205 63100 0000

■ REVO™ Dual Indexing Rotator **CLEARANCE***

Two independent variable speed stepper motors with 8 or 16-bit indexing on both wheels provide maximum design flexibility. Like all Rosco Revo rotators, it is built with a high temperature silicon belt drive, stepper motors, a unique threaded collar for easy installation of glass or steel gobos, friction lock for secure placement and dimmer control capability.



REVO™ Dual Indexing Rotator
No. 205 64200 0000

■ Revo Rotator Accessories

PSU-50
24v x 50 watt power supply
No. 205 71402 0050

PSU-200
24v x 200 watt power supply
No. 205 71402 0200

4 Pin Extension Cable - 7.62m
No. 205 70002 0025

4 Pin Extension Cable - 15.24m
No. 205 70002 0050

■ Vortex Gobo Rotator CLEARANCE*

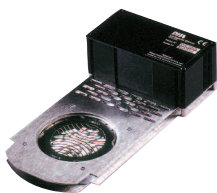
The sleek unit houses two carefully crafted drives. A single silent motor drives both assemblies. Even at full speed, the Vortex 360 Dual Rotator is so quiet it can be used anywhere in a theatre or venue. The Vortex 360 does not require any additional power supply. The transformer/plug that comes with it can be plugged directly into a wall outlet.



Vortex 360 Dual Rotator
No. 205 83000 0000

■ Double Gobo Rotator CLEARANCE*

Rosco's Double Gobo Rotator allows you to achieve kinetic and often spectacular lighting effects by rotating two gobos in the same or opposite directions, at the same or varying speeds. This unit requires a DMX/DC Controller, Variable Speed Controller or MFX Control Adaptor.



Double Gobo Rotator
DC Vari-Speed, 0-9 RPM
No. 78RTR203/V

■ Double Gobo Rotator Accessories

DMX/DC Controller CLEARANCE*
No. 78DCON/DMX

The Rosco DMX/DC Controller provides power and speed control for the Double Gobo Rotator. It is intended for remote control via a DMX512 signal. The output circuitry of Rosco's DMX/DC Controller is identical to that of its four channel Variable Speed Controller. Speed, range, bi-directional drive, load compensation and output protection are all maintained.

Variable Speed Controller CLEARANCE*
No. 78DCON

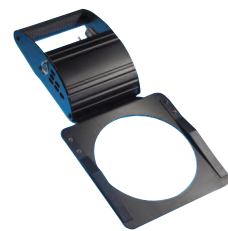
This four channel Variable Speed Controller is designed to provide power, direction and speed control for variable speed rotator units on four independent channels. Output connections are made via four conductor cables terminating in two 4-pin XLR connectors.

Mounting Kit for DC/DMX Controller and a Variable Speed Controller CLEARANCE*
No. 205 70003 0KIT

DC Splitter Cable CLEARANCE*
No. 205 70001 0000

■ Infinity Gobo Animation Unit

The Infinity Gobo Animation Unit, which can be attached to virtually any spotlight, is used with a steel or glass gobo in the gate to provide unusual kinetic effects. The Infinity is equipped with onboard control of the Infinity Disk speed and direction, as well as an on/off switch. Supplied with an adaptor plate and one Infinity Disk of your choice.



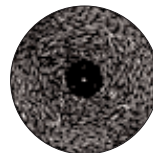
Infinity
No. 205 82500 0000

■ Infinity Disks

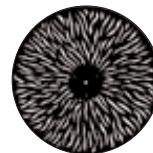
Infinity disks are etched stainless steel disks powder coated to prevent reflection. Eleven designs are available. The disks are 42cm (16.5") in diameter.

Infinity Disks

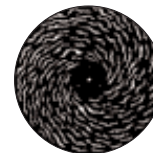
- | | |
|--------------------------|---------------------------------|
| 30011 Tangential Breakup | 30017 Elliptical Breakup |
| 30012 Radial Breakup | 30018 Dot Breakup |
| 30013 Spiral Breakup | 30019 Flicker Breakup |
| 30014 Linear Breakup | 30020 Coarse Radial Breakup |
| 30015 Triangle Breakup | 30021 Coarse Tangential Breakup |
| 30016 Cloud Breakup | |



30011
TANGENTIAL BREAKUP



30012
RADIAL BREAKUP



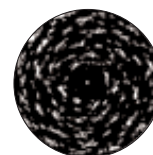
30013
SPIRAL BREAKUP



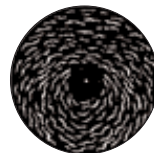
30014
LINEAR BREAKUP



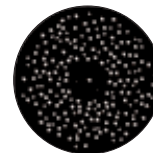
30015
TRIANGLE BREAKUP



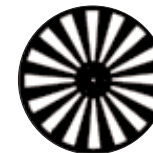
30016
CLOUD BREAKUP



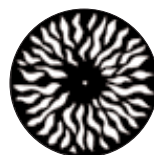
30017
ELLIPTICAL BREAKUP



30018
DOT BREAKUP



30019
FLICKER WHEEL



30020
COARSE RADIAL
BREAKUP



30021
COARSE TANGENTIAL
BREAKUP

■ X24 X-Effects Projector

This has become the projector of choice for shows or installations requiring a fire or water effect. It provides stunning rippling light effects previously unavailable to designers. The projector is available with on-board DMX with dowser for theatrical applications and in an analog version for retail, museum or architectural applications.



X24 DMX X-Effects - Black (lens sold separately)

No. 205 37015 0120

X24 DMX X-Effects - White (lens sold separately)

No. 205 37025 0120

19 Degree Lens for X-Effects

No. 206 37119 0000

30 Degree Lens for X-Effects

No. 206 37130 0000

50 Degree Lens for X-Effects

No. 206 37150 0000

70 Degree Lens for X-Effects

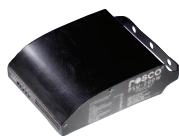
No. 206 37170 0000

X24 Replacement Lamp – emARC SMR202/D1

No. 206 37101 0000

■ Power Supply Units

Rosco's power supplies are compatible with nearly all colour scrollers, gobo rotators and other accessory devices in common use. The PSU-200 has four outputs and four returns. It can be pipe mounted with a C-Clamp or other hanging device. PSU-51 has a DMX passthrough.



PSU-200

PSU-200

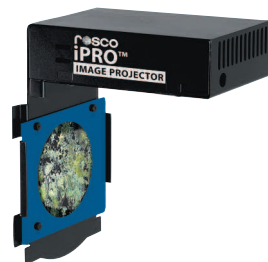
No. 205 71402 0200

PSU-50

No. 205 71402 0050

■ iPro™ Image Projector

The iPro fits as an accessory into the iris slot of a typical ETC Source Four, Altman Shakespeare, Strand SL or Selecon Pacific light fixture. Fitted with an iPro Slide, the iPro™ delivers bright, visible full-colour images that will last between 15 and 50 hours.



iPro Image Projector

No. 265 25100 0240

■ iPro™ Slide Film

For use with the Rosco iPro, iPro Slide Film has been formulated from the ground up to produce the highest quality iPro Slide possible.



iPro Slide Film—1 sheet pack (LTR Size)

No. 265 27995 A401

iPro Slide Film—10 sheet pack (LTR Size)

No. 265 27995 A410

iPro Slide Film—25 sheet pack (LTR Size)

No. 265 27995 A425

■ iPro Printing Pack

Contains 10 sheets of iPro Slide Film and 10 One-Time iPro Slide Mounts

No. 265 27985 A410

■ iPro™ One-Time Slide Mount

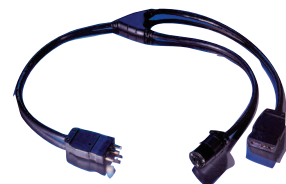
Contains the slide mount and protective film necessary to make an effective iPro Slide. Using your own transparency film and your own printer to create the image, you can then assemble a finished iPro Slide. *Transparency film not included.*

iPro Slide Mount

No. 265 27999 0860

■ Hybrid Two-Fer

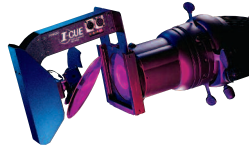
This accessory allows you to connect the iPro and your light fixture into the same dimmer. The two-fer is configured with a male stage-pin connector for the dimmer and both a female stage pin connector for the light and a female parallel blade connector for the iPro.



Hybrid Two-Fer

No. 265 25500 0000

■ I-Cue Intelligent Mirror



A spotlight attachment to re-position a beam of light. This allows a single spotlight in a fixed position to be used for multiple specials in dozens of locations. Onboard DMX is included. A Power Supply Unit is necessary to get 24v DC to the I-Cue.

I-Cue

No. 205 81000 0120

■ DMX Iris



Having complete control over the beam spread of your leko just got easier. The Rosco DMX Iris is quiet, dependable, affordable, and a perfect complement to the I-Cue Moving Mirror. This 24 leaf motorized iris unit can be used with your ETC Source Four, Selecon Pacific or most other modern lekos. Unlike other iris units that have only 18 or fewer leaves in the aperture, the Rosco DMX Iris creates an even edged, perfectly round aperture all the way down to its smallest diameter. Using 1 channel of DMX512, the DMX Iris's movement is smooth even along very slow cross fades. A microprocessor controlled stepper motor connects to the mechanical arm of the iris unit, replacing the unreliable noisy chain drive system found in other products. A manual knob lets you use the DMX Iris without DMX control just by dialing in the aperture size you want, just as you would a conventional iris unit. The Rosco DMX Iris requires a non-dim circuit and is auto-sensing from 100-240 volts for use anywhere in the world. No costly external PSU is needed.

DMX Iris

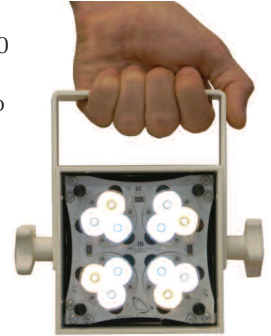
No. 205 74500 0000

■ Miro Cubes™

Miro Cubes™ LED fixtures deliver powerful light output from a self-contained, 50 watt, 10cm (4") cube. An optional ARC configuration is available on the WNC and 4C units, which offers a hard-wired pigtail and recessed RJ45 DMX ports for permanent installs.

■ Miro Cube WNC

This 10cm (4") luminaire provides 3100 lumens of bright, tunable white light. Output can be adjusted from 2800K to 6500K, for film/TV, theatrical or architectural applications.



Miro Cube WNC - Black

No. 515 90050 1020

Miro Cube WNC - White

No. 515 90050 2020

Miro Cube WNC ARC - Black

No. 515 90050 1029

Miro Cube WNC ARC - White

No. 515 90050 2029

■ Miro Cube 4C

Using RGBW Quad Chip technology, this colour mixing wash light offers a true white, plus a palette of saturated mid-tone and pale tint colours which can be dialed in at the touch of a button.



Miro Cube 4C - Black

No. 515 90050 1014

Miro Cube 4C - White

No. 515 90050 2014

Miro Cube 4C ARC - Black

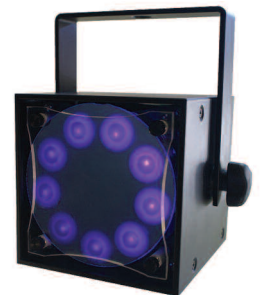
No. 515 90050 1019

Miro Cube 4C ARC - White

No. 515 90050 2019

■ Miro Cube UV

The smallest, most affordable high powered UV light available to lighting professionals. The LED emitters have a 20,000 hour life assuring a virtually maintenance-free installation. The luminaire outperforms conventional long throw fixtures in virtually every category and offers full range dimming for the first time in a UV source.



Miro Cube UV - Black

No. 515 90050 1075

■ Miro Accessories



Top Hat
No. 515 91031 0003



1/2 Top Hat
No. 515 91031 0002



Egg Crate Louvre
No. 515 91031 0003



Barn Doors (set of 4) - Black
No. 515 91030 0000
Barn Doors (set of 4) - White
No. 515 91030 0005



Double-Yoke
No. 515 91021 0000

Spread Lenses for Symmetrical and Asymmetrical Beam Shaping

Standard Lens - Set of 3 (20, 40, 60)

No. 515 91010 0001

Standard Lens - 20 Degrees

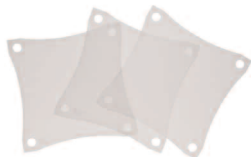
No. 515 91010 0020

Standard Lens - 40 Degrees

No. 515 91010 0040

Standard Lens - 60 Degrees

No. 515 91010 0060



Assymetric Lens - Set of 3 (60x10, 30x50, 75x45)

No. 515 91010 0002

Assymetric Lens - 30x50 Degrees

No. 515 91010 3005

Assymetric Lens - 60x10 Degrees

No. 515 91010 6010

Assymetric Lens - 75x45 Degrees

No. 515 91010 7540



UV Lens - Set of 3 (20, 40, 60)

No. 515 91011 0001

UV Lens - 20 Degrees

No. 515 91011 0020

UV Lens - 40 Degrees

No. 515 91011 0040

UV Lens - 60 Degrees

No. 515 91011 0060



Lens Cover Thumb Screw - Set of 4

No. 515 91012 0004

Standard UV Pass Filter

No. 515 93660 1000

Clear Lens Cover - Rigid

No. 515 91012 0005

■ Braq Cubes™

Braq Cube™ LED fixtures deliver powerful light output from a self-contained, 100 watt, 12.7cm (5") cube. Braq Cubes are easily capable of 15 metre throws, making them perfect for full stage colour washes, as key lighting inside broadcast studios, or as a downlight in retail stores, museums or other architectural installations.

■ Braq Cube WNC

Utilising a tri-colour mix of warm, neutral and cool LEDs, this luminaire provides 7100 lumens of bright, tunable white light. Its output can be adjusted from 2800K to 6500K to create any colour temperature desired for broadcast, theatrical or architectural applications.



Braq Cube WNC w/Power Cord - Black

No. 515 90100 1020

Braq Cube WNC w/Power Cord - White

No. 515 90100 2020

Braq Cube WNC No Power Cord - Black

No. 515 90100 1120

Braq Cube WNC No Power Cord - White

No. 515 90100 2120

■ Braq Cube 4C

Using RGBW Quad Chip technology, this high-output, colour-mixing LED fixture offers a stunning palette of saturated mid-tone and pale tint colours, as well as a gorgeous white light – all of which can be dialed in at the touch of a button.



Braq Cube 4C w/Power Cord - Black

No. 515 90100 1014

Braq Cube 4C w/Power Cord - White

No. 515 90100 2014

Braq Cube 4C No Power Cord - Black

No. 515 90100 1114

Braq Cube 4C No Power Cord - White

No. 515 90100 2114

Miro/Braq Powercon Cord with Edison Plug

No. 515 91015 0005

Powercon Cord with Edison

No. 515 91015 0001

■ **Braq Accessories**



Accessory Holder
No. 515 91032 0000



Top Hat
No. 515 91032 0001



Egg Crate Louvre
No. 515 91032 0002



Barn Doors
No. 515 91032 0003



Double-Yoke Black
No. 515 91023 0000
Double-Yoke White
No. 515 91023 0001

Spread Lenses for Symmetrical Beam Shaping

Standard Lens - Set of 3 (20, 40, 60)

No. 515 91010 0003

Standard Lens - 20 Degrees

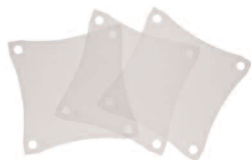
No. 515 91010 0120

Standard Lens - 40 Degrees

No. 515 91010 0140

Standard Lens - 60 Degrees

No. 515 91010 0160



■ **Miro/Braq Accessories**

Power Cord with In-Line Switch
No. 515 91017 0005



5/8" Receiver for Light Stands
No. 515 91026 0001



C-Clamp (1.5" - 2" OD Pipe)
No. 515 91025 0001

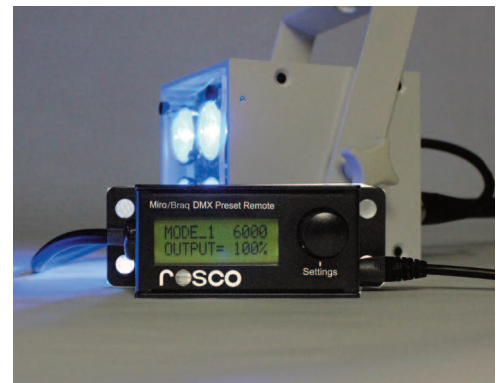


■ **Miro/Braq Preset Remote**

An easy-to-use, handheld remote that provides easy control of Miro or Braq Cube LED fixtures. Four control modes offer 36 colour choices on the 4C, as well as 10 colour temperature presets and smooth, flicker-free dimming for both the 4C & WNC.

Miro/Braq Preset Remote

No. 515 91015 0000



■ Miro/Braq Track Mounting

Track Adaptor Yoke Assembly

Miro Cube Track Adapter Yokes allow the compact and lightweight Miro Cube to be powered from many common lighting track systems. These Adaptor/Yoke Assemblies replace the mounting yoke provided on the Miro Cube and allow it to be easily positioned any where along the length of track. In addition to the standard yoke assemblies offered, custom adaptor yokes can be made for most line voltage or mains powered track system around the world. Please inquire with your local Rosco representative or Distributor.



Note that Miro Cubes cannot be used on low voltage track systems.

Track Adaptor Yoke – Halo Fixtures

No. 515 91101 0000

Track Adaptor Yoke – Juno Fixtures

No. 515 91102 0000

Track Adaptor Yoke – LSI Fixtures

No. 515 91103 0000

Track Adaptor Yoke – Custom

No. 515 91199 0000

Miro WNC ARC w/Data Track Adapter - White

No. 515 91110 0004

Miro WNC ARC w/Data Track Adapter - Black

No. 515 91110 0005

Miro 4C ARC w/Data Track Adapter - White

No. 515 91110 0006

Miro 4C ARC w/Data Track Adapter - Black

No. 515 91110 0007

Braq 254mm (10") Double Yoke Assy. - Black

No. 515 91023 0000

Braq 254mm (10") Double Yoke Assy. - White

No. 515 91023 0001

200mm (8") Double Yoke Assembly

No. 515 91021 0000

300mm (12") Double Yoke Assembly

No. 515 91022 0000

■ Miro/Braq Track Mounting – continued

Two Circuit DMX Data Track

Track lighting is a standard item in the lighting design tool box. It is ideal for architectural, themed environment, low ceiling height, retail and museum applications where discrete, re-configurable, low profile fixtures and a clean look are required. The Black Tank's DMX Data Track takes track lighting to the next level by combining power and full speed DMX512 control in a single track, and track adapters allow you to integrate and control any Miro/Braq Cube™ fixture.



DMX Data Track provides an incredible solution for architectural installations and for reconfigurable performance spaces. The DMX data allows dynamic control of lighting, colour temperature (white light) or colour mixing as desired.

The specification grade surface mounted track system contains 7 conductors and includes 2 uniquely selectable power circuits. A 22 gauge nickel plated copper data bus provides full speed DMX512 control of lighting fixtures and provides control signal at any point along the track. The track consists of an extruded aluminum profile which can be easily cut to length onsite. The track also has pre-punched holes at 200mm (8") spacing for mounting.

100mm (4") White

No. 515911110401

100mm (4") Black

No. 515911110402

200mm (8") White

No. 515911110801

200mm (8") Black

No. 515911110802

300mm (12") White

No. 515911111201

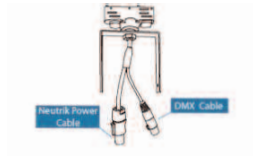
300mm (12") Black

No. 515911111202

■ Miro/Braq Track Accessories

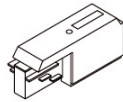
Track Adaptor Yoke with Power and DMX

White
No. 515 91110 0001
Black
No. 515 91110 0002



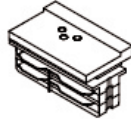
Live End Feed

	Ground Inside	Ground Outside
White	No. 515 91112 0001	No. 515 91113 0001
Black	No. 515 91112 0002	No. 515 91113 0002



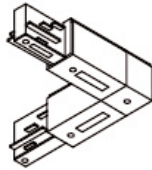
Straight Coupler – Track Joiner

White
No. 515 91115 0001
Black
No. 515 91115 0002



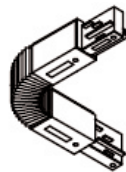
L-Coupler

White
No. 515 91117 0001
Black
No. 515 91117 0002



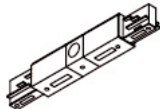
2 Circuit Flex-Coupler

White
No. 515 91119 0001
Black
No. 515 91119 0002



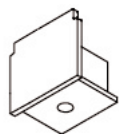
Straight Coupler – Electrical Feed

White
No. 515 91116 0001
Black
No. 515 91116 0002



Dead End Cap

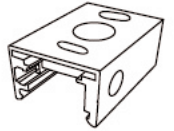
White
No. 515 91114 0001
Black
No. 515 91114 0002



■ Miro/Braq Track Accessories – continued

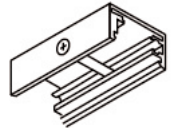
50mm (2") Mounting Clip for 9.5mm (3/8") Diameter Stem

White
No. 515 91122 0001
Black
No. 515 91122 0002



Pendant Clip

50mm (2")
White No. 515 91120 0001
Black No. 515 91120 0002



100mm (4")
White No. 515 91121 0001
Black No. 515 91121 0002

9.5mm (3/8") Pendant Stem 609mm (24") Long

White
No. 515 91123 0001
Black
No. 515 91123 0002



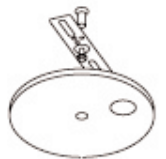
127mm (5") Canopy – Support Only

White
No. 515 91126 0001
Black
No. 515 91126 0002



Canopy Feed Cover

White
No. 515 91125 0001
Black
No. 515 91125 0002



■ Silk™ 210 LED Fixture



Designed to meet the requirements of the most discerning filmmaker, the Silk 210 LED Fixture has been specifically developed for film and video applications that demand high-quality light output with extreme colour accuracy.

Utilising proprietary, state-of-the-art, tungsten & daylight balanced LEDs, Silk 210 produces a high volume of broad-spectrum white light. With TLCI, CRI and R9 metrics in the high 90's, the fixture is capable of producing a high volume of light output at colour temperatures ranging from 2800K – 6500K.

The Silk 210 features a non-glare diffuser to provide a uniform, single-source light, which creates enticingly soft, diffused light that gently embraces its subjects. The fixture has on-board dimming and colour temperature controls for filmmakers to control the fixture on-location, as well as DMX options for integration into broadcast studios. It ships with a 100 – 240 AC power supply, enabling it for worldwide use, and V-Lock, Anton/Bauer and 4-Pin battery options are available to enable maximum portability.

The Rosco Silk 210 LED fixture is available as an individual unit or as a single-unit kit that includes a lightweight, soft-cover case, and an egg crate louvre.

Silk™ 210 LED Fixture
No. LHSIL210UK
No. LHSIL210EU

Silk™ 210 LED Kit
No. KITSIL210UK
No. KITSIL210EU



Silk™ 210 single-unit kit

■ Silk™ 210 Accessories

Silk™ 210 Egg Crate Louver 45°
No. DM-SIL-210LV45

Silk™ 210 Egg Crate Louver 60°
No. DM-SIL-210LV60

Silk™ 210 Barn Doors
No. BD-SIL-210

Silk™ 210 SoftBox
No. DM-SIL-210SB

Silk™ 210 Soft Carrying Case
No. CAS-SIL-210S

Silk™ 210 Rain Cover
No. CAS-SIL-210RC

Silk™ AC PSU
No. TR-COM-120WOC

US IEC AC Power Cable
No. SCHI-C13US

UK IEC AC Power Cable
No. SCHI-C13UK

EU IEC AC Power Cable
No. SCHI-C13EU

Silk™ AC PSU Cradle
No. TR-SIL-120WC

Silk™ Anton/Bauer Battery Cheese Plate
No. BB-SIL-ABCP

Silk™ V-Lock Battery Cheese Plate
No. BB-SIL-VLOCP

■ LitePad Vector™

LitePad Vector produces a soft, flattering light output that filmmakers, lighting directors and photographers can use in their projects when they're on-location and in small studios. LitePad Vector provides the same edge-lit LED lighting that LitePad is known for – but with improved brightness, colour rendering and a streamlined footprint. Measuring in at 200mm x 200mm, LitePad Vector is available in two models – Vector CCT (variable colour temperature) and Vector Daylight (fixed at 6000K). Thanks to its on-board dimming & colour temperature controls, and its compatibility with standard Anton/Bauer or V-Mount battery packs, the LitePad Vector is the optimal choice for illuminating any project that needs a compact, mobile light fixture.

LitePad Vector CCT
No. 292 00808 0120

LitePad Vector Daylight
No. 292 00808 0056



■ LitePad Vector™ Accessories

LitePad Vector Honeycomb Egg Crate
No. 292 00808 0200

LitePad Vector OPTI-FLECS LED Enhancement Filter Kit
No. 292 00080 8200

LitePad Vector Rain Cover
No. 292 00080 8300

LitePad Anton/Bauer Cheeseplate Assembly
No. 291 10305 0101

LitePad V-Mount Cheeseplate Assembly
No. 291 10305 0102

LitePad Light Stand
No. 2906 6104 9089

LitePad Carabiner Bottle Holder
No. 292 00080 8500

C-Clamp (1.5"-2" OD Pipe)
No. 515 91025 0001

Replacement 5/8" (16mm) Light Stand Receiver
No. 515 91026 0001

■ LitePad Vector™ Kits

LitePad™ Vector is designed to travel anywhere a soft, flattering light output is needed. Two LitePad Vector Kits are available in order to maximize LitePad Vector's compact, lightweight mobility: a Two-Head Backpack Kit and a Three-Head Location Lighting Kit. Whether it's on top of a mountain, deep inside an ice cave or an office building across town during rush hour, some locations are more remote than others – but they all need proper lighting. Both kits enable shooters to quickly and professionally set up their lighting at any location.

See the LitePad Vector Kits Web Page for a full listing of what's inside each kit.



LitePad Vector Backpack Kit
2-Head LitePad Vector CCT Backpack Kit
No. 292 02080 8120
2-Head LitePad Vector Daylight Backpack Kit
No. 292 00808 0056



LitePad Vector Location Lighting Kit
3-Head LitePad Vector CCT Location Lighting Kit
No. 292 03080 8120
3-Head LitePad Vector Daylight Location Lighting Kit
No. 292 03080 8056

■ LitePad Axiom

The LitePad Axiom range is a series of LED light sources designed specifically for filmmakers, videographers and photographers. The housing not only protects the light source, it also provides a universal mounting system. This allows the LitePad Axiom units to be affixed with brackets for C-Stands or other conventional methods. Each product is available with either tungsten-level or daylight-level output and with or without a transformer.

LitePad Axiom Daylight

LitePad Axiom 76mm x 152mm Daylight (3" x 6")

No. 290 70306 0240

LitePad Axiom 76mm x 305mm Daylight (3" x 12")

No. 290 70312 0240

LitePad Axiom 152mm x 152mm Daylight (6" x 6")

No. 290 70606 0240

LitePad Axiom 152mm x 305mm Daylight (6" x 12")

No. 290 70612 0240

LitePad Axiom 305mm x 305mm Daylight (12" x 12")

No. 290 71212 0240

LitePad Axiom 610mm x 610mm Daylight (24" x 24")

No. 290 72424 0240

LitePad Axiom Tungsten CLEARANCE*

LitePad Axiom 76mm x 152mm Tungsten (3" x 6")

No. 290 80306 0240

LitePad Axiom 76mm x 305mm Tungsten (3" x 12")

No. 290 80312 0240

LitePad Axiom 152mm x 152mm Tungsten (6" x 6")

No. 290 80606 0240

LitePad Axiom 152mm x 305mm Tungsten (6" x 12")

No. 290 80612 0240

LitePad Axiom 305mm x 305mm Tungsten (12" x 12")

No. 290 81212 0240

LitePad Axiom 610mm x 610mm Tungsten (24" x 24")

No. 290 82424 0240



■ LitePad™ HO+

LitePad HO+ is a slim profile, edge-lit LED light source. At only 8mm thick, LitePad HO+ produces a soft quality of light that is easy on the eyes and runs at cool temperatures. Available in eight standard sizes, in either tungsten-level or daylight-level outputs and with or without transformers.

LitePad HO+ Daylight

LitePad 76mm x 152mm HO+ Daylight (3" x 6')

No. 290 40306 0240

LitePad 76mm x 305mm HO+ Daylight (3" x 12")

No. 290 40312 0240

LitePad 152mm x 152mm HO+ Daylight (6" x 6")

No. 290 40606 0240

LitePad 152mm x 305mm HO+ Daylight (6" x 12")

No. 290 40612 0240

LitePad 305mm x 305mm HO+ Daylight (12" x 12")

No. 290 41212 0240

LitePad 610mm x 610mm HO+ Daylight (24" x 24")

No. 290 42424 0240

LitePad 76mm Circle HO+ Daylight (3")

No. 290 40003 0240

LitePad 305mm Circle HO+ Daylight (12")

No. 290 40012 0240

LitePad HO+ Tungsten CLEARANCE*

LitePad 76mm x 152mm HO+ Tungsten (3" x 6')

No. 290 50306 0240

LitePad 76mm x 305mm HO+ Tungsten (3" x 12")

No. 290 50312 0240

LitePad 152mm x 152mm HO+ Tungsten (6" x 6")

No. 290 50606 0240

LitePad 152mm x 305mm HO+ Tungsten (6" x 12")

No. 290 50612 0240

LitePad 305mm x 305mm HO+ Tungsten (12" x 12")

No. 290 51212 0240

LitePad 610mm x 610mm HO+ Tungsten (24" x 24")

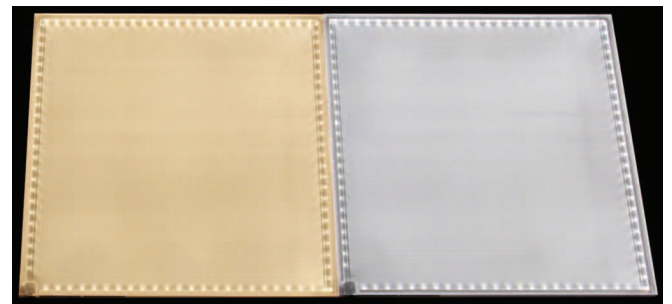
No. 290 52424 0240

LitePad 76mm Circle HO+ Tungsten (3")

No. 290 50003 0240

LitePad 305mm Circle HO+ Tungsten (12")

No. 290 50012 0240



LitePad HO+ is available in Tungsten and Daylight.

■ LitePad™ DL

LitePad DL is a slim profile (8mm) light source that delivers soft, even illumination in a sustainable, energy-efficient LED package, consuming about 40% less energy than LitePad HO+. LitePad DL was designed with event planners, theatrical lighting and architectural designers in mind, offering a more economical lighting solution for these professionals. Available in six standard sizes in daylight-level outputs and with or without transformers.

LitePad DL Daylight CLEARANCE*

LitePad 76mm x 76mm DL (3" x 3")

No. 290 10303 0240

LitePad 76mm x 152mm DL (3" x 6")

No. 290 10306 0240

LitePad 76mm x 305mm DL (3" x 12")

No. 290 10312 0240

LitePad 152mm x 152mm DL (6" x 6")

No. 290 10606 0240

LitePad 152mm x 610mm DL (6" x 12")

No. 290 10612 0240

LitePad 610mm x 610mm DL (12" x 12")

No. 290 11212 0240



■ Custom LitePad™

Custom LitePad HO90

Rosco LitePad HO90 is a flat panel LED light source providing even, indirect lighting and is available in three colour temperatures: 2800K, 4000K, and 5300K. At only 8mm thick, LitePad HO90 is perfectly suited to virtually any backlighting installation or to projects where only a cool, low profile light source can be used. LitePad's patented system is comprised of indirect LED sources machined into a cast acrylic panel. Light amplifying channels etched into the rear surface of the plastic sheet smoothly and evenly distribute light across the entire surface of the LitePad. This durable and reliable construction can be fabricated in virtually any size or shape and is easily installed. A variety of options are available to customise light output, power management, and dimming control. Rosco project consultants are available to assist in specifying the optimal configuration of panels and accessories for your project.

LitePad HO90 offers all the same features of Rosco's standard LitePad product but offers a superior colour rendering for projects where colour fidelity is critical.

■ Custom LitePad™ - continued

Custom LitePad CCT

Rosco LitePad CCT is a tunable white, flat panel LED light source, providing even, indirect lighting. At only 8mm thick, LitePad CCT is perfectly suited to virtually any backlighting installation or to projects where only a cool, low profile light source can be used. LitePad's patented system is comprised of indirect LED sources machined into a cast acrylic panel. Light amplifying channels etched into the rear surface of the plastic sheet smoothly and evenly distribute light across the entire surface of the LitePad. This durable and reliable construction can be fabricated in virtually any size or shape and is easily installed.

LitePad CCT Tunable White offers all the same features of Rosco's standard LitePad product but includes a variable colour temperature light output. Two separate channels of LEDs allow you to dial in the precise quality of white light, from 3000K to 6500K. Dimming and control accessories sold separately.

Custom LitePad RGB

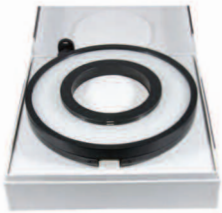
Rosco LitePad RGB is a colour changing, flat panel LED light source providing even, indirect lighting. At only 10mm thick, LitePad RGB is perfectly suited to virtually any backlighting installation or to projects where only a cool, low profile light source can be used. LitePad's patented system is comprised of indirect LED sources machined into a cast acrylic panel. Light amplifying channels etched into the rear surface of the plastic sheet smoothly and evenly distribute light across the entire surface of the LitePad. This durable and reliable construction can be fabricated in virtually any size or shape and is easily installed. A variety of options are available to customise light output, power management, and dimming control. Rosco project consultants are available to assist in specifying the optimal configuration of panels and accessories for your project.

LitePad RGB Variable Colour offers all the same features of Rosco's standard LitePad product but uses high quality colour mixing RGB chips. Three channels of control are used to dial in the precise colour desired. Dimming and control accessories sold separately.



■ LitePad™ Loop **CLEARANCE***

Rosco LitePad Loop is an LED ring light designed to fit practically any style camera, including film, video and DSLR's. Because the Loop is powered by Rosco's LitePad LED technology, this ring light has a soft, flattering, shadowless light output that is perfect for close-ups, portraits, interviews, product shots or macro photography. Available as an individual unit that comes with everything needed to attach the Loop to your camera or in a Pro Kit that contains additional mounting and power accessories that allow for cord-free mobility.



LitePad Loop
LitePad Loop
 291088750BOX

LitePad Loop Pro Kit
 291088750KIT

LitePad Loop Accessories

LitePad Loop Thumb Screw Replacements - 4 Pack
 No. 291200021032

LitePad Loop Anton Bauer Bracket w/Cheeseplate
 291103050101

LitePad Loop Colour Pack
 291200000008

LitePad Loop 101mm (4") Rods
 291200030204

LitePad Loop 203mm (8") Rods
 291200030208

LitePad Loop AA Battery Kit
 291636510812

LitePad Loop 101mm (4") L-Bracket Kit
 291600010014

LitePad Loop Light Stand Plate
 291600040002

LitePad Loop Light Masks
 291200001008

LitePad Loop Pull String Storage Pouch
 291660000909

■ LitePad™ Kits

Rosco offers four different kits for filmmakers, digital shooters and still photographers. Each of the four is available with a full complement of Axiom LitePads and the required accessories for focusing, mounting, and colouring. Kits can be specified with either daylight-level output LitePads or tungsten-level output. A fifth kit, the HO+ Everywhere Kit, is equipped with both tungsten and daylight level HO+ LitePads.



*Digital Shooter
 LitePad Kit*

See the Rosco web site for details on what is in each kit.

LitePad Pro Gaffer's Kit AX: Daylight

No. 290 240AXGKIT

LitePad Digital Shooters Kit AX: Daylight

No. 290 2400DSKIT

LitePad Quick Kit AX: Daylight

No. 290 240AXBKIT

LitePad Still Photo Kit AX: Daylight

No. 290 2400SPKIT

LitePad Pro Gaffer's Kit AX: Tungsten **CLEARANCE***

No. 290 241AXGKIT

LitePad Digital Shooters Kit AX: Tungsten **CLEARANCE***

No. 290 2410DSKIT

LitePad Quick Kit AX: Tungsten **CLEARANCE***

290 241AXBKIT

LitePad Still Photo Kit AX: Tungsten **CLEARANCE***

290 2410SPKIT

LitePad HO+ Everywhere Lighting Kit

No. 290 2400ELKIT

■ LitePad™ Accessories

LitePad 3 amp Transformer

No. 290 63503 0240

LitePad 5 amp Transformer

No. 290 63505 0240

Car Adapter

No. 290 63600 0000

Y Splitter

No. 290 63700 0000

3m Extension Cable

No. 290 63750 0000

4-Way Spider

No. 290 63730 0000

AA Battery Holder

No. 290 63651 0812

4-Pin Adapter Cable

No. 290 63770 0012

Anton/Bauer Adapter

No. 290 63790 0012

Right Angle 10' Extension Cable

No. 290 63751 0000



Car Adapter



Anton/Bauer Adapter

■ LitePad™ Accessories – continued

- LitePad 76mm Mounting Bracket (3")**
No. 290 63900 0003
- LitePad 152mm Mounting Bracket (6")**
No. 290 63900 0006
- LitePad 305mm Mounting Bracket (12")**
No. 290 63900 0012
- LitePad 610mm Mounting Bracket (24")**
No. 290 63900 0024

1/4 – 20 Baby (5/8) Pin
No. 290 63910 1420

LitePad Axiom 1/4 – 20 Bracket
No. 290 63901 1420

LitePad Axiom Baby Pin Bracket
No. 290 63901 0058

LitePad Axiom 5/8 Receiver Bracket
No. 290 63901 0158

LitePad Axiom Wall Plate Bracket
No. 290 63901 0304

LitePad Axiom Battery Holder (for AA Battery)
No. 290 63901 8080

76mm x 152mm Eggcrate (3" x 6")
No. 290 65000 0306

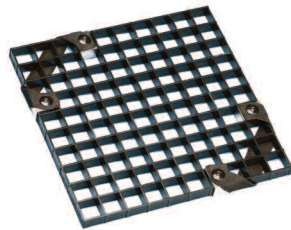
76mm x 305mm Eggcrate (3" x 12")
No. 290 65000 0312

152mm x 152mm Eggcrate (6" x 6")
No. 290 65000 0606

152mm x 305mm Eggcrate (6" x 12")
No. 290 65000 0612

305mm x 305mm Eggcrate (12" x 12")
No. 290 65000 1212

610mm x 610mm Eggcrate (24" x 24")
No. 290 65000 2424



152mm x 152mm
Eggcrate

Single Fader Dimmer

No. 290 64000 0012

2 CH/DMX Dimmer

No. 290 64100 0012

LitePad Light Stand

No. 290 66104 9089

LitePad Snake Arm

No. 290 66114 2002

LitePad Swivel Arm

No. 290 66158 1420

LightPad Cold Shoe Attachment

No. 290 66100 1420

EZ-TIE

No. 29066TIE0241



Swivel Arm

■ LitePad™ Accessories – continued

76mm Circle Medium Spot Lens (3")

No. 290 67001 0003

76mm x 152mm Medium Spot Lens (3" x 6")

No. 290 67001 0306

76mm x 305mm Medium Spot Lens (3" x 12")

No. 290 67001 0312

152mm x 152mm Medium Spot Lens (6" x 6")

No. 290 67001 0606

152mm x 305mm Medium Spot Lens (6" x 12")

No. 290 67001 0612

305mm x 305mm Medium Spot Lens (12" x 12")

No. 290 67001 1212

610mm x 610mm Medium Spot Lens (24" x 24")

No. 290 67001 2424

305mm Circle Medium Spot Lens (12")

No. 290 67001 0012

76mm Circle Full Spot Lens (3")

No. 290 67002 0003

76mm x 152mm Full Spot Lens (3" x 6")

No. 290 67002 0306

76mm x 305mm Full Spot Lens (3" x 12")

No. 290 67002 0312

152mm x 152mm Full Spot Lens (6" x 6")

No. 290 67002 0606

152mm x 305mm Full Spot Lens (6" x 12")

No. 290 67002 0612

305mm x 305mm Full Spot Lens (12" x 12")

No. 290 67002 1212

610mm x 610mm Full Spot Lens (24" x 24")

No. 290 67002 2424

305mm Circle Full Spot Lens (12")

No. 290 67002 0012

Digital Shooter LitePad Case

No. 290 63860 0000

Still Photo LitePad Case

No. 290 63870 0000

Gaffer's AX LitePad Case

No. 290 63851 0000

Quick AX LitePad Case

No. 290 63855 0000

610mm x 610mm LitePad Case (24" x 24")

No. 290 63880 0000

76mm x 152mm Axiom Housing (3" x 6")

No. 290 69999 0306

76mm x 305mm Axiom Housing (3" x 12")

No. 290 69999 0312

152mm x 152mm Axiom Housing (6" x 6")

No. 290 69999 0606

152mm x 305mm Axiom Housing (6" x 12")

No. 290 69999 0612

305mm v 305mm Axiom Housing (12" x 12")

No. 290 69999 1212

610mm x 610mm Axiom Housing (24" x 24")

No. 290 69999 2424

■ **Off Broadway™**

A vinyl acrylic paint which may be used on a wide variety of scenic materials including hard scenery, foam scenery, drops and ground cloths.



Available in: 3.79L

White, White White and Black also available in 18.95L

White	No. 5350
White White	No. 5351
Black	No. 5352
Yellow Ochre	No. 5353
Burnt Umber	No. 5354
Raw Sienna	No. 5355
Burnt Sienna	No. 5356
Raw Umber	No. 5357
Earth Umber	No. 5358
Ultramarine Blue	No. 5359
Fire Red	No. 5360
Deep Red	No. 5361
Orange	No. 5362
Emerald Green	No. 5364
Chrome Oxide Green	No. 5365
Lemon Yellow	No. 5366
Golden Yellow	No. 5367
Purple	No. 5368
Magenta	No. 5369
Pthalo Green	No. 5371
Sky Blue	No. 5372
Pthalo Blue	No. 5373
Imperial Green	No. 5374
Navy	No. 5375
Brilliant Red	No. 5376
Van Dyke Brown	No. 5380
Paynes Grey	No. 5382

Metallic Colours

Available in: 0.473L, 0.946L, and 3.79L

Bright Gold	No. 5383
Gold	No. 5384
Silver	No. 5385
Copper	No. 5386
Antique Gold	No. 5387

Product numbers refer to colour only.

Add 14 for 0.473L, 15 for 0.946L, 17 for 3.79L and 19 for 18.95L.

Approximate Paint Weights:

- 0.473L = 1 kilogram
- 0.946L = 1.5 kilograms
- 3.79L = 5 kilograms
- 18.95L = 27 kilograms

■ **Paint Sample Kits**

Off Broadway Paint Kit

No. 5300

23-piece kit contains 29.57ml samples of each Off Broadway colour plus Clear Flat and Clear Gloss.

Supersaturated Paint Kit

No. 6030

28-piece kit contains 29.57ml samples (neutral base not included).

Fluorescent Paint Kit

No. 5700

9-piece kit contains 29.57ml samples.

VividFX Sample Kit

No. 6200

13-piece kit contains 29.57ml samples.

■ **Supersaturated Roscopaint™**

Brilliant dye-like colours formulated to be diluted with substantial quantities of water while retaining binder strength. Flexible vinyl acrylic binder. Adheres to most scenic surfaces, including muslin, plastics and metal.



Available in: 1L and 5L

Red	No. 5965
Green Shade Blue	No. 5968
Ultramarine Blue	No. 5969
Chrome Green	No. 5971
Emerald Green	No. 5972
Phthalo Green	No. 5973
Imperial Green	No. 5974
Magenta	No. 5975
Brilliant Red	No. 5976
Spectrum Red	No. 5977
Purple	No. 5979
Iron Red	No. 5980
Chrome Yellow	No. 5981
Yellow Ochre	No. 5982
Raw Sienna	No. 5983
Moly Orange	No. 5984
Burnt Umber	No. 5985
Raw Umber	No. 5986
Burnt Sienna	No. 5987
Lemon Yellow	No. 5988
Turquoise Blue	No. 5989
Prussian Blue	No. 5990
Navy Blue	No. 5991
Paynes Grey	No. 5992
Leather Lake	No. 5993
Grass Green	No. 5994
Cerulean Blue	No. 5996
Hunter Green	No. 5997
Van Dyke Brown	No. 5998

Product numbers refer to colour only.
Add 1 for 1L and 5 for 5L.

■ **Supersaturated Concentrated Bases™**

Neutral Base	No. 6001 - 1L and 5L
White	No. 6002 - 1L, 5L and 10L
Velour Black	No. 6003 - 1L, 5L and 10L
Gloss Medium	No. 6004 - 1L and 5L

Product numbers refer to colour only.
Add 1 for 1L, 5 for 5L and 10 for 10L.

■ **Acrylic Glazes**

Designed to be diluted with water and applied as an overcoat to a painted surface. They can also be mixed with the paints for additional binder strength.

Available in: 3.79L

Clear Gloss	No. 55801
Clear Flat	No. 55811

■ **ColorCoat™**

Fast drying water borne acrylic enamel. Good choice for decks and floors due to its high abrasion resistance.

Available in: 0.946L and 3.79L

Clear	No. 5620
Clear Satin	No. 5621
Black	No. 5634
Flat Black	No. 5635
Aluminum	No. 5636

Product numbers refer to colour only.
Add 15 for 0.946L and 17 for 3.79L.

■ **Tough Prime™**



Rosco offers a unique water-based primer with adhesion properties that allow it to bond to the hard-to-prime scenic materials found in every scene shop. Tough Prime covers just about any surface, including PVC pipe, aluminum, foams and concrete floors, as well as wood and foam core.

Available in: 1L and 5L

Tough Prime White	No. 604005
Tough Prime Black	No. 6055

Product numbers refer to colour only.
Add 17 for 3.79L and 19 for 18.95L.

■ **Fluorescent Paint**

Vivid vinyl acrylic colours are brilliant in normal light and glow brightly when bathed in ultraviolet light. White fluoresces a light blue under black light. Invisible blue appears milky white under normal light but glows blue in ultraviolet.

Available in: **0.473L, 0.946L and 3.79L**

White	No. 5779
Red	No. 5780
Orange	No. 5781
Yellow	No. 5782
Green	No. 5783
Blue	No. 5784
Invisible Blue	No. 5785
Pink	No. 5786
Gold	No. 5787

Product numbers refer to colour only.
Add 14 for 0.473L, 15 for 0.946L and 17 for 3.79L.

■ **Vivid FX™**

The exceptional pigments in Vivid FX glow most brilliantly between 365-380 nanometers. This creates stunning black light effects and the colours intermix cleanly to provide a wide array of intermediate fluorescent hues.

Available in: **0.473L, 0.946L and 3.79L**

Bright White	No. 526 250
Lemon Yellow	No. 526 251
Orange Sunset	No. 526 252
Orange	No. 526 253
Scarlet Red	No. 526 254
Hot Pink	No. 526 255
Magenta	No. 526 256
Violet	No. 526 257
Deep Blue	No. 526 258
Brilliant Blue	No. 526 259
Aquamarine	No. 526 260
Electric Green	No. 526 261
Deep Green	No. 526 262

Product numbers refer to colour only.
Add 14 for 0.473L, 15 for 0.946L and 17 for 3.79L.

■ **Roscoglo™**

A phosphorescent water-based paint designed for use in total darkness for stage direction and visual orientation.

29.57ml	No. 5665
0.473L	No. 56614

■ **Rosco Fitch Brushes**

Rosco's professional quality scenic fitches, often called lining brushes, are available individually and in two handy kits. All brushes feature seamless ferrules and natural bristles.



1/4" Fitch	No. 661010
1/2" Fitch	No. 661110
3/4" Fitch	No. 661210
1" Fitch	No. 661310
1 1/4" Fitch	No. 661410
1 1/2" Fitch	No. 661510
2" Fitch	No. 661610
3" Fitch	No. 661810

7 Brush Set No. 661710
Includes fitches whose ferrule widths are:
1/4", 1/2", 3/4", 1", 1 1/4", 1 1/2" and 2"

8 Brush Set No. 669190
Includes all the brushes in the 7 Brush Kit plus a 3" Fitch Foliage

Premiere Clear

Water-borne urethane coating suitable for sealing and protecting painted finishes, floors, and high-traffic surfaces.



Available in: 0.95L and 3.79L

- Premiere Clear Flat** No. 150 068300
- Premiere Clear Satin** No. 150 068200
- Premiere Clear Gloss** No. 150 068100

Add 032 for 0.95L and 128 for 3.79L.

CrystalGel™

Rosco CrystalGel is a non-toxic, water-based material which provides a clear, plastic-like coating on virtually any surface used in modern stagecraft.



- CrystalGel 3.79L** No. 150 07400 0128
- CrystalGel 18.95L** No. 150 07400 0640

Foamcoat™

Water-based, flame retardant, protective coating for all rigid foams. Foamcoat dries to a super hard durable coating that resists chipping and cracking.



- Foamcoat 3.79L** No. 607 10017
- Foamcoat 13.26L** No. 607 10021

Flexcoat™

Flexible, non-toxic, water-based coating for polyurethane and polystyrene foam. It contains no plasticizers, so it will not become brittle with age or exterior exposure.



- Flexcoat 3.79L** No. 607 12017
- Flexcoat 18.95L** No. 607 12019

FlexBond™

Clear, flexible scenic glue which bonds many porous and non-porous scenic materials. Rosco FlexBond dries to a clear, hard, yet pliable coating that does not suffer from the "tackiness" common in many other flexible glues.



- FlexBond 3.79L** No. 607 50017
- FlexBond 18.95L** No. 607 50019

Rosco Flamex NF/Natural Fiber Flame Retardant

Should be used on fabrics like cotton, linen, wool, burlap and most other materials made of natural fibers. Premixed for use straight out of the bottle, NF is perfect for treating backdrops, velours, muslin cycloramas and decorative fabric panels.

- Flamex NF 3.79L** No. 150 079NF 0128
- Flamex NF 18.95L** No. 150 079NF 0640

Rosco Flamex SF/Synthetic Fiber Flame Retardant

Effectively treats many synthetic fibers, such as polyesters, nylons, acrylics and rayons, as well as most cotton/synthetic blends. Premixed for use straight out of the bottle.

- Flamex SF 3.79L** No. 150 079SF 0128
- Flamex SF 18.95L** No. 150 079SF 0640

Rosco Flamex DF/Delicate Fabrics Flame Retardant

Use for synthetic weaves, rayon or silk. Premixed for use straight out of the bottle, DF maintains the gentleness and soft hand of fragile fabrics and draperies.

- Flamex DF 3.79L** No.150 079DF 0128
- Flamex DF 18.95L** No. 150 079DF 0640

Rosco Flamex PC/Paper and Cardboard Flame Retardant

Effectively treats papers and un-waxed cardboard materials. Premixed for use straight out of the bottle, PC is perfect for props and set pieces made from flammable paper products.

- Flamex PC 3.79L** No. 150 079PC 0128
- Flamex PC 18.95L** No. 150 079PC 0640

Rosco Flamex WD/Raw Wood Penetrating Flame Retardant

WD is intended for untreated wood, plywood, cellulose board, acoustical board and corrugated paper.

- Flamex WD 3.79L** No. 150 079WD 0128
- Flamex WD 18.95L** No. 150 079WD 0640

Rosco Flamex PA/Latex Paint Additive Flame Retardant

PA can be added to most latex or water based paints in order to create a flame retardant paint film. PA is useful for treating scenic materials that cannot easily be treated by other methods and for supplying the additional protection of a fire retardant paint coating.

- Flamex PA 0.24L jar** No. 150 079PA 0008
- Flamex PA Case of 12 jars** No. 150 079PA 1208
- Flamex PA 18.95L** No. 150 079PA 0640

■ **TV Paint™**

Specifically formulated for the sensitive contrast requirements of standard television systems, this versatile acrylic paint can be applied to nearly any surface and comes ready to use right out of the bucket.

TV White – A neutral grey that meets the specifications for 60% reflectance (maximum brightness intended for transmission).

3.79L
No. 573517

TV Black – A rich, matte black that meets the specifications for 3% reflectance (minimum brightness intended for transmission).

3.79L
No. 574017

■ **Keying Paints**

Video Paint Ultimatte™

Designed with the Ultimatte® technical staff to meet the requirements of their keying effects systems.

Ultimatte® Blue 3.79L No. 57201
Ultimatte® Green 3.79L No. 57211
Ultimatte® Super Blue 3.79L No. 57221

Chroma Key™

Specifically formulated to provide high luminance values and colour saturation for keying effects. The acrylic colours provide high build, one-coat coverage for use on nearly any surface.

Available in: 3.79L and 18.95L

Chroma Key Blue 3.79L No. 57101
Chroma Key Blue 18.95L No. 57105

Chroma Key Green 3.79L No. 57111
Chroma Key Green 18.95L No. 57115

■ **DigiComp™ Materials**

DigiComp is Rosco's trade name for paint and cable precisely crafted to allow seamless compositing for film, video and digital use. In the modern compositing or matting process

■ **DigiComp® Paint**

DigiComp Blue 3.79L No. 5705 0128 18.95L No. 5705 0640	DigiComp Green 3.79L No. 5707 0128 18.95L No. 5707 0640
---	--

■ **DigiComp Cable** **CLEARANCE***

2.4 mm (3/32") DigiComp cable
1.6 mm (1/16") 7x7, coated diameter 2.4 mm (3/32")
217 kg (480 lb.) rating, 152 m (500') spool

DigiComp Green Cable
No. 850 57075 0938
DigiComp Blue Cable
No. 850 57055 0938

4.8 mm (3/16") DigiComp cable
3.2 mm (1/8") 7x19, coated diameter 4.8 mm (3/16")
917 kg (2000 lb.) rating, 152 m (500') spool

DigiComp Green Cable
No. 850 57075 1875
DigiComp Blue Cable
No. 850 57055 1875

6.4 mm (1/4") DigiComp cable
4.8 mm (3/16") 7x19, coated diameter 6.4 mm (1/4")
4200 lb. (1905 kg) rating, 500' (152 m) spool

DigiComp Green Cable
No. 850 57075 2500
DigiComp Blue Cable
No. 850 57055 2500

■ Cinefoil

Cinefoil is a matte black aluminum material used for masking light leaks and/or eliminating unwanted reflections. It can be quickly molded to form barndoors, flags and other configurations.



Cinefoil in a box:

Cinefoil 61cm x 7.62m	No. 360112
Cinefoil 30.48cm x 15.24m	No. 360113
Cinefoil 1.22m x 7.62m	No. 360114

Cinefoil in a bag:

Cinefoil 61cm x 7.62m	No. 101 P1001 2425
Cinefoil 30.48cm x 15.24m	No. 101 P1001 1250

Cinefoil is also available in shorter lengths for still photographers, videographers and students. Called Photofoil it offers the same light control properties at an economical price.

Matte Black Photofoil, 30.48cm x 3.05m

No. 1010 1001 1210

Matte Black Photofoil, 61cm x 3.05m

No. 1010 1001 2410

■ Butterflies and Overheads

A number of Cinegel materials are available to fit the standard butterfly and overhead frames used in motion picture and television production. All materials are supplied edge-finished with binding and grommets on 61cm (24") centres and sewn hems, except for No. 3014 Hilite and No. 3029 Silent Frost. The latter two have an ultrasonic welded seam every 1.22m (48").

Details and more information at:

<http://www.roscotex.com>

■ Acrylic Panels

Acrylic sheets for daylight correction or light intensity reduction. Available in: 1.22m x 2.44m and 1.52m x 2.44m sheets. Minimum quantity of 5.

Roscolex 85	No. 3761
Roscolex ½ CTO	No. 3751
Roscolex N.3	No. 3762
Roscolex N.6	No. 3763
Roscolex N.9	No. 3764

■ TruColor IR Filter

Rosco's new TruColor IR camera filter restores proper color saturation in situations where the use of heavy neutral density filter washes out color balance in a composition.

TruColor IR Filter 10.16cm x 10.16cm (4" x 4")

No. 120 48010 0404

TruColor IR Filter 10.16cm x 14.35cm (4" x 5.65")

No. 120 48010 4565

TruColor IR Filter 14.35cm x 14.35cm (5.65" x 5.65")

No. 120 48010 5656

TruColor IR Filter 15.24cm x 15.24cm (6.6" x 6.6")

No. 120 48010 6666

■ Roscopak™

Roscopak material is light in weight, yet strong and durable. The material can be taped or tacked to virtually any wall, ceiling or panel to turn that area into an efficient reflector. Roscopak measures 1.2m x 1.4m (4' x 4½'), and is packaged in a handy pocket size pouch.

Roscopak S/G (silver/gold)

No. 35850910

■ Reflection Media

Used for surfacing reflector boards or wherever reflected light is required. The product designation generally indicates the quality of the reflection. Rolls are 122cm x 7.6m (48" x 25').

Roscoflex M (mirror)

No. 3801

Roscoflex H (hard)

No. 3802

Roscoflex S (soft)

No. 3803

Roscoflex SS (supersoft)

No. 3804

Roscoflex G (gold tinted)

No. 3805

Spun Silver

No. 3830

RoscoScrim

(perforated silver/black)

No. 3809

Featherflex S/G

(silver/gold)

No. 3812

Thin Mirror - S (60" x 20')

No. 3813

Thin Mirror - G (60" x 20')

No. 3814

Cinebounce – White/Black

No. 3840

■ Polarizing Filters

A neutral grey linear polarizing film used in front of lights to reduce the glare caused by smooth surfaces such as glass, water, paper and certain metallic objects. Should be placed at a slight distance from hot lights.

Sheet: 43cm x 51cm	No. 730011
Roll: 43cm x 3.05m	No. 730012
Roll: 43cm x 15.24m	No. 730013

■ RoscoVIEW™

RoscoView is a unique two-part window control system for film and television professionals. It consists of wide width polarizing filter installed on windows and a matching camera polarizing filter. Rotating the camera filter results in 100% control of exterior brightness as seen through the window. P.O.A.

See the demo video at:

http://www.rosco.com/FTVP/roscoview_videos.cfm

■ RoscoShades™

The RoscoShade system allows television professionals to quickly and conveniently balance outdoor and studio light when there is a window in the TV or video picture. Custom filter shades are made to precisely fit the studio windows, so there is no light or glare. You can choose the filtration you need and have it in place in just a few minutes by electronically or manually lowering or retracting the appropriate material.

Details and a demo video at:

<http://www.rosco.com/FTVP/rosco Shades.cfm>



Chautauqua Theatre Company (July 2007), "The Just" by Albert Camus
Directed by Ethan McSweeney, Lighting Design by Scott Zielinski

Rosco's projection screens can be used for front or rear projection, digital or analog imaging, close up or long throw installations.

Colours and recommended uses:

- Front White:** Bright white surface for front projection use.
- Twin White:** Suitable for front or rear projection, or as a cyclorama.
- Grey:** Recommended for rear projection.
- Black:** Recommended for rear projection and high ambient light situations.
- Light Translucent:** Virtually clear, suitable for daytime, exterior rear projections or in exceptionally bright ambient light conditions.

■ 1.4m Seamless Screen

1.4m wide. Minimum order is one linear metre.

Grey	No. 2100
Twin White	No. 2101
Black	No. 2103
Light Translucent	No. 2104

■ 2.2m Seamless Screen

Minimum order is one linear metre.

Light Translucent	No. 2113
--------------------------	----------

■ 2.4m Seamless Screen

Minimum order is one linear metre.

Grey	No. 2110
Twin White	No. 2111
Front White	No. 2114

■ Custom Screen

Rosco will fabricate a custom screen to your precise specifications for size, shape, and finishing details. Standard pricing includes grommets on 305mm (12") centers, vertical seams, finished edges and a pipe pocket and skirt. Irregular shapes can be made but may require additional set-up charges. Delivery in as little as two weeks. All Rosco screens are flame-retardant and washable.

■ 2.8m Screen

Double width continuous rolls of two 55" sections welded together. Minimum order is two linear yards.

Grey	No. 2105
Twin White	No. 2106
Black	No. 2107
Light Transparent	No. 2108

■ Spanfix

This versatile fastener is constructed of 5/32" (4mm) elastic cord with a sturdy molded hook. Overall length is 12".

Spanfix	No. 2100A
----------------	-----------

■ Sure Clamp™

The Sure Clamp has a grip range of 3.18cm to 5cm and is used to hang lighting fixtures or scenery directly to pipes. An extra-secure substitute for the standard C-Clamp, it closes automatically when weight is hung on it and is further secured by a hand knob which requires no tools for adjustment.

Sure Clamp
No. 850 78020 0000



■ Flicker Candles™

A theatrical alternative to flame candles, these units look and act just like the real thing . . . right down to the dripped wax. Most importantly, they are powered electrically, so they don't present potential hazards of using live flames. A simple 9-volt AC Adaptor allows you to raise or lower the dimming level on the Flicker Candles.



Classic Range

This range of flicker candles consists of standard candle units with the natural flickering flame and can be operated from either batteries or power supply units.

Candle - Basic unit (20mm diameter tube)
No. 25428901

Candle with 20cm long white stem and flying leads 90mA
No. 25428902

Hand held candle with 20cm long white stem, on/off switch and battery connector
No. 25428903

Converted storm/hurricane lantern with on/off switch and battery connector
No. 25428913

Converted storm/hurricane lantern with flying leads 90mA
No. 25428914

Classic single candlestick with flying leads 90mA
No. 25429002

Classic three arm candelabra with on/off switch and battery connector
No. 25428904

Candle in a bottle with on/off switch and battery connector
No. 25428905

■ Flicker Candles™ – continued

Professional Range

This range of Flicker Candles simulates the natural flicker and have a small bulb attached to the unit to give the realistic glow of a flickering candle.

Church Candle - basic unit (40mm diameter translucent tube)
No. 25429000

Church Candle with 45cm long white stem and flying leads 225mA
No. 25429001

Candle basic unit (20mm diameter tube)
No. 25429004

Candle with 20cm long white stem and flying leads 150mA
No. 25429005

Candle with 20cm long white stem, on/off switch & battery connector
No. 25429006

Wee-Willie-Winkie saucer with on/off switch & battery connector
No. 25429003

Three arm candelabra with on/off switch and battery connector
No. 25429007

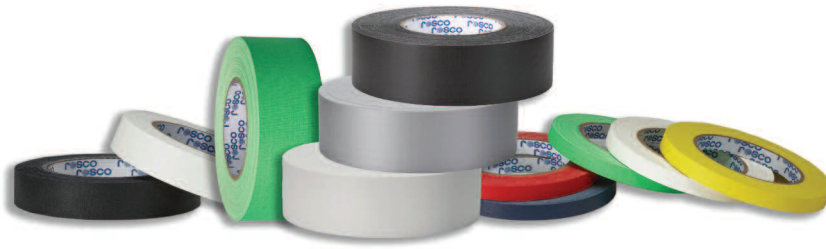
Power Supplies

Some candles may be operated from either batteries or mains DC PSU but must be loaded according to the recommendations

Mains power supply for 1 Classic Candle 90mA to 100mA
No. 25429010

Mains power supply for 3 Classic Candles or 1 Professional 200mA to 300mA
No. 25429020

Mains power supply for 25 Classic or 10 Professional Candles 1A to 3A
No. 25429030



■ GaffTac™ 48mm (2") Gaffer Tape

Manufactured using a premium quality polyethylene coated cloth laminate with a natural rubber-based adhesive. This unique adhesive offers high tack with excellent adhesion yet still removes cleanly without leaving behind any sticky residue. It's also easily tearable, which means no need for cutting tools. The fine mesh weave of the cloth laminate base is resistant to edge fraying and offers a smooth, matte surface with minimal sheen – perfect for remaining “invisible” on set, in the grid or in frame.

Rolls measure 48mm x 50m (2" x 55 yds.)

Black	No. 851 12221 4850
Black (Case of 24)	No. 851 12221 0BOX
White	No. 851 12222 4850
White (Case of 24)	No. 851 12222 0BOX
Grey	No. 851 12223 4850
Grey (Case of 24)	No. 851 12223 0BOX

■ GaffTac™ 24mm (1") Marking Tape

Made on a traditional cotton cloth and vinyl coated fabric base and uses a synthetic rubber blend adhesive. This combination provides high tack with excellent adhesion yet still removes cleanly without leaving behind a sticky residue. It's also easily tearable, which means no need for cutting tools. The textured weave of cotton fabric helps insure a non-reflective, matte surface, making it perfect for taping down various set and lighting components, as well as maintaining clean, legible written text.

Rolls measure 24mm x 25m (1" x 27 yds.)

Black	No. 851 12221 2425
Black (Case of 24)	No. 851 12221 1BOX
White	No. 851 12222 2425
White (Case of 24)	No. 851 12222 1BOX

■ GaffTac™ 12mm (½") Spike Tape

Manufactured using a premium quality polyethylene coated cloth laminate with a natural rubber-based adhesive. This unique adhesive offers high tack with excellent adhesion yet still removes cleanly without leaving behind any sticky residue. It's also easily tearable, which means no need for cutting tools. The fine mesh weave of the cloth laminate base is resistant to edge fraying and offers a smooth, matte surface with minimal sheen.

Rolls measure 12mm x 25m (½" x 27 yds.)

Red	No. 851 15210 1225
Red (Case of 96)	No. 851 15210 0BOX
Yellow	No. 851 15220 1225
Yellow (Case of 96)	No. 851 15220 0BOX
Blue	No. 851 15230 1225
Blue (Case of 96)	No. 851 15230 0BOX
Fluorescent Green	No. 851 15240 1225
Fluorescent Green (Case of 96)	No. 851 15240 0BOX
White	No. 851 15250 1225
White (Case of 96)	No. 851 15250 0BOX

■ GaffTac™ 48mm (2") Keying Tape

Made on a traditional cotton cloth and vinyl coated fabric base and uses a synthetic rubber blend adhesive. This combination provides high tack with excellent adhesion yet still removes cleanly without leaving behind a sticky residue. It's also easily tearable, which means no need for cutting tools. The textured weave of cotton fabric helps insure limited reflections or glare that might spoil the keying shot.

Rolls measure 48mm x 50m (2" x 55 yds.)
12mm x 25m (½" x 27 yds.)

Flourescent Green 2" (48mm)	No. 851 12224 4850
Flourescent Green 2" (48mm) (Case of 24)	No. 851 12224 0BOX
Flourescent Green ½" (12mm)	No. 851 15240 1225
Flourescent Green ½" (12mm) (Case of 24)	No. 851 15240 0BOX

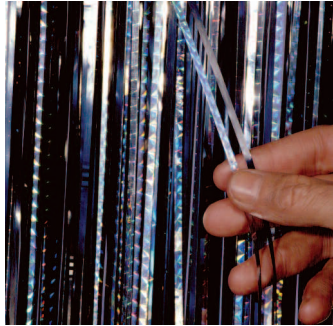
■ Glow Tape

Glow-in-the-dark tape ideal for marking low light areas. It glows to a yellow-green colour that can remain illuminated for hours. 24mm wide.

5m roll (16.35 ft.)	No. 500005
10m roll (32.7 ft.)	No. 500010
30m roll (98.4 ft.)	No. 500015

■ Slit Drape

This Rosco version of slash curtain consists of overlapping 0.31cm strips of durable, flame retardant vinyl, 91.44cm wide (36").



Solid Black	2.4m	No. 261013
	4.9m	No. 262015
	7.3m	No. 262117
Solid Silver	2.4m	No. 260913
	4.9m	No. 261615
	7.3m	No. 261517
Solid Gold	2.4m	No. 262513
	4.9m	No. 262615
	7.3m	No. 262717
Black/Silver	2.4m	No. 260813
	4.9m	No. 261715
	7.3m	No. 261817
Black/Gold	2.4m	No. 260213
	4.9m	No. 260515
	7.3m	No. 261317
Black/Diffraction	2.4m	No. 260013
	4.9m	No. 260315
	7.3m	No. 261117
White/Diffraction	2.4m	No. 260613
	4.9m	No. 260715
	7.3m	No. 261217
Silver/Diffraction	2.4m	No. 260113
	4.9m	No. 260415
	7.3m	No. 261417
Iridescent	2.4m	No. 263013
	4.9m	No. 263015
	7.3m	No. 263017
Silver/Iridescent/Gold	2.4m	No. 263413
	4.9m	No. 263415
	7.3m	No. 263417
Silver/Gold/Diffraction	2.4m	No. 263413
	4.9m	No. 263415
	7.3m	No. 263617

■ Showcloth™

A weave of thread and self extinguishing plastic strips produces an elegant, shimmering fabric with a soft hand and beautiful drape. Showcloth has a selvedge edge for easy sewing.

Roll: 1.22m x 9.15m
Bolt: 1.22m x 100m

White/Gold	No. 202 41210 11
Black/Gold	No. 202 41210 21
White/Silver	No. 202 41210 31
White/Iridescent	No. 202 41210 41
Black/Silver	No. 202 41210 51
Black/Black	No. 202 41210 61
Black/Iridescent	No. 202 41210 71

Add 6 to product number for 9.15m roll.
Add 9 to product number for 100m bolt.

■ Glamé™

Glamé is woven from a durable, lightweight, self-extinguishing plastic film.



Roll: 1.22m x 9.15m
Bolt: 1.22m x 100m bolts

Silver	No. 2006
Gold	No. 2009
Silver/Black	No. 2012
Gold/Black	No. 2013
Gold/Silver	No. 2014
Silver/Diffraction	No. 2032
Gold/Diffraction	No. 2033
Clear/Diffraction	No. 2034
Iridescent/Diffraction	No. 2035
Razzle Dazzle	No. 2041
Black	No. 2045
Black/Iridescent	No. 2052
Silver/Iridescent	No. 2053
Gold/Iridescent	No. 2054

Add 16 to product number for 9.15m roll.
Add 19 to product number for 100m bolt.

■ Shimmer Scrim™

Shimmer Scrim is a combination of thread and plastic film woven into a theatrical fabric. This self-extinguishing fabric may be used for traditional scrim effects or as a shimmering, airy drape. It has a selvedge edge for easy sewing.

Roll: 1.22m x 9.15m
Bolt: 1.22m x 100m

White/Iridescent/Gold	No. 2051
White/Clear/Iridescent	No. 2056
White/Iridescent/White	No. 2055
Black/Clear/Silver	No. 2057
Black/Clear/Iridescent	No. 2005
Black/Clear/Black	No. 2059
Black/Gold/Clear	No. 2061

Add 16 to product number for 9.15m roll.
Add 19 to product number for 100m bolt.

■ Glitter CLEARANCE*

RoscoGlitter, in 1/64" hexagonal chips, is uniquely suited for production applications. The chips are brilliant under stage lights and can be sprinkled on or mixed directly into Clear Gloss or Flat Acrylic for easy application.

Available in 114g and 0.45kgs.

Silver	No. 402890
Gold	No. 402891
Red	No. 402893
Sky Blue	No. 402894
Royal Blue	No. 402895
Green	No. 402897
Fuchsia	No. 402898

Add 11 to product number for 114g.
Add 12 to product number for 0.45kgs.

■ Breakaways

Plastic breakaways shatter realistically and are specially packaged to assure that they are delivered intact. Bottles are shipped with labels unattached for easy customization. Minimum order: 6 breakaways. (Bottles must be the same colour.)



Pint Curvy Glass	No. 80001
Brown Beer Bottle	No. 80009
Budweiser Bottle	No. 80010
Budweiser Bottle - Green	No. 80011
Milk Bottle	No. 80012
Straight Pint Glass	No. 80013
Decanter	No. 80015
Whiskey Glass	No. 80016
Whiskey Cut Glass	No. 80017
Cola Bottle	No. 80021
Teachers Whiskey Bottle	No. 80031
Whiskey Bottle - Clear	No. 80051
Water Glass	No. 80061
Highball Glass	No. 80062
Wine Paris Goblet	No. 80071
Champagne Flute	No. 80081
Undressed Champagne Bottle	No. 80091
Green Gin Bottle	No. 800101G
Green Wine Bottle	No. 80051G

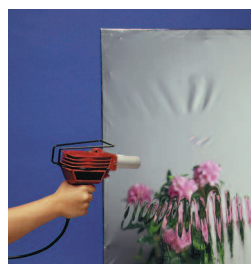
■ Mirrors

A variety of reflective surfaces in a metalized plastic format.

Flexible Silver (1.22m x 9.15m)	No. 390602
Thin Silver (1.52m x 9.15m)	No. 392502
Thin Gold (1.40m x 9.15m)	No. 392702
Rigid Gold (1.35m x 9.15m)	No. 393002
Rigid Silver (1.35m x 9.15m)	No. 393102

■ Shrink Mirror™

Rosco's Silver Shrink Mirror is a lightweight substitute for heavy glass mirror. This metalized plastic laminate is designed to be mounted to a frame and heat shrunk for superior reflectance. **1.37m x 9.15m**



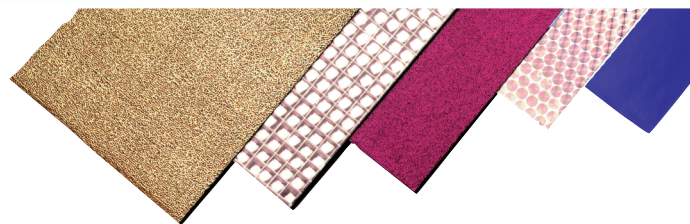
Silver Shrink Mirror No. 3909

■ Smooths™ CLEARANCE*

The smooth colours are pressure-sensitive for easy mounting.

61cm x 9.2m (24" x 30' rolls).

Bright Orange	No. 397422
Gun Metal Grey	No. 397522
Silver	No. 398122
Pink Fizz	No. 398322
Light Gold	No. 398522
Smooth Iridescent	No. 398622



■ Metalix™ CLEARANCE*

This durable metalized plastic material is available in a variety of colours and surfaces.

Metalix 1.22m x 9.15m roll

Silver Pebble	No. 390202
Soft Silver	No. 397102
Gold Pebble	No. 397202

■ Diffractions™ CLEARANCE*

Five laser etched plastic films for prismatic effects. All the diffractions are adhesive backed.

Diffractions 61cm x 4.6m rolls

Exotic Circles	No. 295622
¼" Mosaic	No. 296022
Horizontal Stripes	No. 296222

■ Sparklene™ CLEARANCE*

Eleven glitter laminate plastic film colours. Sparklene is pressure sensitive for easy mounting.

Roll: 61cm x 4.6m

Bolt: 61cm x 100m

	Rolls	Bolts
Blue	No. 399122	No. 399122001
Red	Not available	No. 399222001
Green	Not available	No. 399322001
Fuchsia	No. 399422	No. 399422001
Gold	No. 399522	Not available
Fluorescent Pink	Not available	No. 396122001
Blue/Green Iridescent	Not available	No. 396422001
Orange	Not available	No. 396522001
Bronze	Not available	No. 396722001